



## **Request for Proposals (RFP)**

### **Non-Profit Partnership for Homeless Sheltering Services**

**Issued by:** City of Pensacola

**Date Issued:** March 14, 2025

**Proposal Submission Deadline:** April 14, 2025

### **Introduction**

On September 27, 2024, the City of Pensacola published a Request for Proposal from qualified firms/individuals for the production and furnishing of “modular shelters” for immediate, short and mid-term housing that would meet all applicable Florida building codes as well as all development and zoning regulations of the City. Pallet PBC, located in Everett, Washington was chosen to construct and install individual units up to 70 square feet, but not exceeding 120 square feet. Pallet PBC has extensive experience, having built over 116 shelter communities in more than 119 cities across 29 states, while working alongside 70 unique homeless service providers. Over 60% of their staff have lived experience, including those who have experienced homelessness, recovery from substance use disorder or involvement in the criminal justice system.

The City has set aside up to \$1,011,000 of American Rescue Plan Act (ARPA) funds for clients who are experiencing homelessness and who were most affected by the economic hardships brought about by the COVID-19 pandemic. The City will utilize these funds to purchase up to \$1,011,000 in individual housing units and or hygiene units as shown in the attached pages. These units can be installed by the City’s contractor on properties owned or leased by select non-profits who are capable of sustaining the units in terms of maintenance and upkeep. Any property on which the units are installed **MUST** be site ready with electrical hookups readily available. The City’s installation does **NOT** include any site preparation. The ownership of the units will remain with the City but be leased to the qualifying agency for the minimum leasable amount (\$1-\$100) per year.

The City of Pensacola is seeking proposals from qualified non-profit organizations to collaborate in providing sheltering services to individuals experiencing homelessness. This

initiative aims to expand the availability of safe, temporary housing and supportive services to address the needs of homeless individuals within Escambia County. The City's participation will include providing small transitory and semi-permanent housing for agencies who can support the installation, maintenance and upkeep of these units while providing supportive and wrap-around services to unhoused individuals.

### **Project Overview**

The purpose of this RFP is to identify interested non-profit partners who have real property available upon which these units can be installed, who have the capability of maintaining the units and can offer supportive services, including but not limited to: case management, counseling, life skill coaching and job readiness programs. Selected partners will work closely to ensure comprehensive care and resources are available to homeless individuals.

### **Scope of Services**

Selected non-profit partners will be expected to provide:

- A property that is prepared and includes all site preparation and access to electrical hookups and water hookups for hygiene units.
- Capabilities necessary to assist Pallet Shelter PBC in successfully installing units including passing all relevant inspections. It will be the agency's responsibility to ensure that all relevant inspections are completed.
- Maintenance, utilities and upkeep of the housing units
- Case management services, including individualized service plans.
- Connection to supportive services such as mental health counseling, substance abuse treatment, and employment assistance.
- Collaboration with other community resources and organizations.
- Data collection and reporting in alignment with the City's requirements.

The City of Pensacola will be expected to:

- Work with the selected agency to define what units will be most effective for the proposed site
- Purchase the units
- Work with Pallet Shelter PBC and selected agency to install the units on the selected site.
- Cooperate with the agency to monitor the site's performance.

## **Eligibility Requirements**

Eligible applicants must:

- Be a registered 501(c)(3) non-profit organization.
- Have a minimum of 3 years' experience providing shelter or supportive services to homeless populations.
- Demonstrate the capacity to provide culturally competent and trauma-informed care.
- Maintain compliance with all applicable health, safety, building and zoning regulations.
- Show evidence of partnerships with other community service providers.
- Have and maintain general liability insurance with at least \$2,000,000 in coverage.

## **Proposal Submission Requirements**

Interested organizations must submit a proposal including:

- Organization background and mission statement including tax identification number.
- A list of all funding sources that will be used to fund this project.
  - A copy of the agency's most recently completed audited financial statements or year-ending financial statements.
- Description of sheltering services to be provided. Please note that all shelters must pass all relevant inspections required by the City or County.
  - The number, type and location of the proposed shelters including address or property reference number.
  - Layout and schematic for the shelters at the proposed location along with the location of electrical hookups and water/sewer hookups where required.
  - Current zoning of the proposed site
  - Whether or not your agency owns the site or leases the site. If the agency leases the site, how many years are left on the current lease.
- Staffing plan and qualifications including any changes in key personnel.

- Description of the supportive services to be provided at the site. Please include a copy of your agency's case management plan.
- Timeline for service implementation.
- Past performance and experience with similar projects.

### **Evaluation Method and Criteria**

Proposals will be sent to the Homelessness Reduction Task Force who will evaluate them on behalf of the City.

Proposals will be evaluated based on the following criteria:

- Organizational experience and capacity (25%)
- Service model and approach (30%)
- Budget and cost-effectiveness (20%)
- Sustainability (15%)
- Innovation and unique service delivery methods (10%)

### **Submission Instructions**

Proposals must be submitted electronically by April 14, 2025 to [adaily@cityofpensacola.com](mailto:adaily@cityofpensacola.com) or mailed to the following address.

City of Pensacola  
Attn: Alex Daily, Finance Department  
222 W. Main Street  
Pensacola, FL 32502

Late submissions will not be considered. Questions regarding this RFP may be directed to Amy Lovoy, Finance Director, [alovoy@cityofpensacola.com](mailto:alovoy@cityofpensacola.com) by March 28, 2025.



## **Timeline**

<b>Activity</b>	<b>Date</b>
RFP Release	March 14, 2025
Inquiry Deadline	March 28, 2025
Proposal Submission Deadline	April 14, 2025
Award Notification	June 13, 2025

## **Additional Information**

The City is committed to reducing homelessness. Organizations who are experts in this field are strongly urged to apply.

Thank you for your interest in partnering with us to serve those in need. We look forward to reviewing your proposal and working together to create meaningful solutions for homelessness in our community.

# PALLET OVERVIEW

---

Pallet PBC, a Public Benefit Corporation, designs and manufactures rapidly deployable, reusable, and scalable shelter solutions for homelessness and disaster response. Our shelter villages are designed to address the human displacement crisis by meeting the immediate needs of displaced populations and the workforces there to serve them. Through close collaboration with cities, counties, provinces, states, non-profits, tribal governments, and faith-based organizations, Pallet has established more than 116 shelter communities since our founding in 2016.

Like the City of Pensacola, we are committed to providing solutions and services for unhoused populations. Our approach is captured in our dual mission to shelter displaced people and to provide people with stable employment and growth opportunities.

As a fair chance employer, many of our employees have experienced homelessness, recovery from substance use disorder, or involvement in the criminal legal system and have found stability through meaningful employment. The lived experience of our employees has impacted our business in a positive way. We invest in people to maximize the potential of our employees by providing job and life skills training as well as personal support programs. We are a Certified Living Wage employer.

Pallet has created a transitional employment model to support people with lived experience. We provide avenues for careers with a living wage through our 9-month pre-apprenticeship training program. Pallet pays the employee for 40 hours per week: 32 hours are committed to manufacturing shelters and 8 hours are dedicated to an off-site pre-apprenticeship program. After completion of the training course, employees will transition into new jobs by entering a formal apprenticeship, working for partner employers, or continue with Pallet in a specific growth plan.



# PROPOSED SOLUTION

Pallet® is The Leader in Rapid-Response Shelter Villages®. Our villages are designed to meet the needs of displaced people and those suffering from unsheltered homelessness.

Pallet is uniquely qualified to address your unique shelter needs and project timelines. Our experience deploying shelter communities across North America and our ability to manufacture 7-10 units per day makes us unmatched in emergency shelter production. Further, our shelters are designed and built in North America by a team with lived experience.

Pallet holds a patent on our shelter design in both the U.S. and Canada. Our shelters utilize structural composite panels, including our unique wall connector plates, bolts, and interlocking panels that create a sturdy, durable connection. This design provides superior shear strength at the wall-to-wall connection points without metal studs in the walls or roof system.

Our polypropylene panels are resistant to mold, mildew and rot, which makes them durable even in high-moisture climates. The panels are additionally formulated with a UV-resistant treatment, leading to resilience in the presence of constant sun exposure. Additionally, jurisdictions with high wind speeds benefit from our engineered design that incorporates a continuous load path from roof to floor, giving our shelters a 170 mph Exposure B Wind Rating and 155 mph Exposure C Wind Rating.

With climate control options, electrical connections, integrated shelving, fire safety equipment, and optional beds and desks, Pallet produces the only available turn-key shelter solution that can be rapidly deployed on a large scale to address the human displacement crisis.

We have worked with communities just like yours and have the experience to support the City of Pensacola with safe, secure shelters for unhoused members of your community. We can also provide hygiene units necessary to meet the needs of Pallet village residents. The products we propose for this project and their specifications are outlined below. In Appendix A we include full product specifications sheets for both our 70 sq. ft. and 120 sq. ft. Sleeper shelters and our proposed Hygiene units.

It is important to note that our current 70-square-foot shelter, as shown in the following product specifications, allows for just one bed. We do offer two bed sizes: one for a single individual and a queen size bed for couples. Our engineering team is prepared to modify our design and the location of our heater/A/C unit within the shelter so that two beds can be accommodated. This change can be completed within twelve (12) weeks of the contract award date.

Your project will be supported by an experienced and dedicated team. Team bios are located in Appendix B.

- Greg Millholland, VP of Production & Engineering, is responsible for ensuring that the units are built to meet high quality standards within the timeframe necessary to meet the requirements of this RFP as well as the needs of your community.
- James Bennett manages the deployment of our shelters. He has personally worked on over 65 installations.
- John Baskett will be your point of contact immediately following the contract award. John will work with you to coordinate delivery schedules and address any questions pertaining to site preparation and Pallet products.
- Sarah Al-Khalil, our Customer Service Specialist, will be your point of contact during the warranty period.

## Assembly and Disassembly

Pallet has fabricated, shipped, and assembled over 4,500 structures including both sleeping shelters and hygiene units. Our shelters have been deployed in both the U.S. and Canada. We have set up Pallet communities in 29 states including Florida.

Our shelters are designed and manufactured in our production facility in Everett, Washington. The panelized structures are then packed flat onto pallets and stored ready for shipment. Once shipped to the project site, each unit can be assembled in one hour on any level site with minimal tools. No heavy equipment is required to assemble the structures. Our crew can assemble an entire shelter village in a day.

We understand that not all units will be shipped to the same location or at the same time. We can fulfill your requirement that all units be delivered by November 1, 2026. Shelters and Hygiene units can be shipped within eight (8) to twelve (12) weeks of request and often sooner. We maintain a certain quantity of finished shelters on hand.

An 8,000 lb. (3629kg) forklift with 8-foot (2.7m) forks will be needed onsite for delivery at the responsibility and cost of the customer. Pallet is not responsible for site grading, leveling of shelters, staking to the ground, or electrical connections to the shelters.



## Parts and Repairs Information

After the units are deployed and fully assembled, we will conduct a site walk-through, allowing your team to ensure proper installation of the structures and confirm that the installation is complete. If any work is identified as incomplete, a punch list will be developed and addressed immediately. Once that is completed and approved, your two-year warranty will commence.

During the warranty period and beyond, you will be supported by our Customer Service Specialist, Sarah Al-Khalil. She is your primary contact for any assistance, warranty claims, repairs, and additional supply requests such as mattresses. She is also your main contact for sharing product feedback. You can reach her at support@palletshelter.com. We aim to respond to requests within 24 hours.

## Material Durability and Sustainability

Our S2 Sleeper shelters and Hygiene units are designed and built with sustainability in mind. They can be reused for 15+ years. The polypropylene-based thermoplastic panels at the core of our design are 100% recyclable and are resistant to mold, mildew and rot as stated above. Additional components such as steel flashing and the aluminum used in our base frames, wall studs, and trim pieces are also fully recyclable. The choice to use these materials, as well as our commitment to creating durable, reusable structures built to last in various climates and weather conditions, lead to a significant reduction of waste in our manufacturing process.

Our panel material is a resilient, lightweight, recyclable, engineered thermoplastic composite sandwich panel. The panel is engineered with high glass content skins optimized to provide durability and stiffness at the lowest weight possible. The foam core is manufactured with Herculean™ technology, providing a thermally fused composite structure. The product is hydrophobic, resists corrosion, mildew, degradation, and can be easily cleaned. Both exterior surfaces feature Royal Watson® glossy white finish for long-lasting UV stability and Surlok® bonding technology. BioStat® technology is built into the Royal Watson® surface providing a surface that meets the FDA requirements for direct food contact.

Our shelter panels have a Class C Fire Rating from independent testing under ASTM 84, the same rating expected of residential room interiors per IBC section 803. The skins on our shelter panels have a Class B fire rating.

Our structures meet IBC wind and snow load requirements. Structural analysis for wind loads has found that with site-appropriate anchoring, our standard 70- and 120-square-foot shelter units can withstand up to 155 mph winds, while our Heavy-Duty versions can withstand 170 mph winds.

## Interior Furnishings: Beds, Desk, Shelves/Storage, Mattress Pad, Door Lock

The following items are included within your shelter:

- Bed frame – Powder coated metal mattress foundation frame
- Shelving/storage space
- Operable residential windows
- Lockable exterior door
- High quality foam mattress with water resistant cover
- Reading/task light
- Emergency egress window
- Desk

## Electric Appliances:

### Air Conditioner, Task Light, Smoke/CO detector, Plug-Ins, 120V Electrical Kit w/1500-Watt heater

#### 2,750-Watt Heater

Contractor shall supply and install LPW Series in-wall mounted forced-air electric heaters manufactured by King Electrical Mfg. Company, of the wattage and voltage as indicated on the plans.

King's exclusive dual Pic-A-Watt steel fin elements allow customers to select from a range of wattage options, tailoring the heater to an area's specific heating requirements. Standard with a 3-position Heat/Fan/OFF-DISCONNECT Switch and a fan delay to help dissipate heat from the high-mass steel plate fin elements thereby prolonging heater life and increasing energy efficiency. The high quality built-in thermostat has degrees on the label so temperature selection is easy and accurate.

- **Motor:** Heavy-duty, cast iron, unit bearing, permanently lubricated with 20cc oil reservoir, 1440 RPM. Enclosed impedance protected with intake air cooling motor for increased bearing life.
- **Fan:** High efficiency, dynamically balanced 5-blade aluminum fan. 185 CFM. 15 ft Air Throw.
- **Thermostat:** 1-Pole built-in thermostat 45-80°F operating range.
- **Approvals:** cULus

## A/C Unit (8,000 – 10,000 BTU)

- Whirlpool air conditioner
- **Exceptional Cooling:** This powerful through the wall air conditioner is not suitable for window installation. COOLING FLEXIBILITY: With 8-way directional louvers, 3 fan speeds, 4 operation modes, and a temperature setting range of 62-86F degrees, you can customize your cooling to fit your specific needs. On-board electronic controls are supplemented by a convenient remote control, and an integrated, programmable 24-hour timer completes the customization options.
- **Universal Fit Size:** With dimensions of 20.3" D x 24.2" W x 14.5" H, the Whirlpool Through the Wall fits into sleeves 24.5"-27" wide and comes with a trim kit.
- **Eco and Sleep Function:** Eco Mode conserves energy by turning off the compressor when your desired room temperature is reached. Sleep Mode adjusts the temperature and fan speed to make you more comfortable, using less energy without disturbing your sleep.
- Eco function uses less energy for savings on your utility bill
- Removable and washable air filter with clean filter alert for convenient maintenance
- U.L. listed

## Smoke and Carbon Monoxide Detector

FireX Combination Smoke and Carbon Monoxide Alarm model CUAC10YFEX.

This alarm offers a modern 5" design ideal for all living spaces. Cutting edge technology sends fast alerts and enhanced sensing technology reduces false alarms.

Comprehensively tested and designed to the latest UL standard for safety and reliability, this FireX alarm is powered by a 120V AC with 10-year backup battery, so you never have to change a battery and alerts you to both smoke & carbon monoxide (CO) using a single, cost-effective device. Equipped with end-of-life notifications, the alarm will beep to remind you it's time to replace it 10 years after it is powered. This alarm also has interconnected alarm activation so you never miss an emergency and can get out faster.

## Dimensions of Proposed Units (Product sheets are included in Appendix A of our proposal)

Pallet Hygiene units are designed for comfort, function, and privacy. All Pallet Hygiene units use standard bathroom fixtures and layouts. Each unit is easy to install and maintain, with complete plumbing and power systems in place upon delivery. Adding these facilities to a village is as simple as placing them, installing fixtures, and connecting them to standard infrastructure lines.

Infrastructure Needs

### S2 Sleeper (70 sq. ft.)

Private sleeping shelter for one person or couple  
70 sq. ft. (6.5 m<sup>2</sup>)  
Footprint Dimensions:  
10'3" W x 7'3" D x 6'9 1/2" to 7'8" H (312.4 cm W x 221 cm D x 207 cm to 233.7 cm)



### S2 Sleeper (120 sq. ft.)

Private sleeping shelter for 2 people, families, or office space  
120 sq. ft. (11.15 m<sup>2</sup>)  
Footprint Dimensions:  
17'5" W x 7'3" D x 6'9 1/2" to 7'8" H (530.9 cm W x 221 cm D x 207 cm to 233.7 cm)



### 2-Stall Hygiene

Hygiene facility with toilet, sink, and shower  
100 sq. ft. (9.29 m<sup>2</sup>)  
Footprint Dimensions:  
13'9 7/8" W x 7'9 3/4" D x 7'6" to 8'10" H (421.3 cm W x 238.1 cm D x 228.6 cm to 269.2 cm H)



### Accessible + Half Bath Hygiene

Hygiene facility with accessible layout  
100 sq. ft. (9.29 m<sup>2</sup>)  
Footprint Dimensions:  
13'9 7/8" W x 7'9 3/4" D x 7'6" to 8'10" H (421.3 cm W x 238.1 cm D x 228.6 cm to 269.2 cm H)





## Infrastructure Needs

Pallet hygiene units are a flexible system that can be installed on a wide variety of surfaces and connected to a number of power sources and standard sewer service lines.

Each hygiene unit comes with a toilet, shower, and sink. A smoke detector/CO monitor is installed in each unit and an emergency egress is incorporated into the design of the structures.

Basic Hygiene units shall have:

- A minimum 100 sq. ft. interior space
- A minimum of a toilet, shower, and sink
- Smoke/CO detector
- Emergency egress
- Compliant with all relevant building codes

## Code Compliance

We have reviewed the City of Pensacola building codes.

**Fire Rating:** Foamed plastic insulation and panel cores are required to have a flame spread index of no greater than 75 92603.3. Our panel material has a class B skin (Flame spread index = 50, smoke development index = 135 per Intertek testing). Our core has a flame spread index of 110-115, and a smoke development index of 190-350. While we fall short of full compliance, we provide easy egress and fire extinguishers in all units.

Our shelters fall within the fire separation distance requirement for type V-B construction.

**Wind:** Our shelters are designed to withstand wind loads of 155 mph to 170 mph exposure, exceeding the 151 mph requirement in the code.

**Electrical:** Our units are designed to comply with the 2023 National Electrical Code (NEC).

**Roof Load:** Our shelters are designed to withstand a superimposed roof load of up to 80 lb. per sq. ft., exceeding the Pensacola Florida code requirement of 20 lb. per sq. ft.

**Safety Glazing:** Windows within a 24" arc of door are required to have safety glazing (2406.2). We use tempered glass for our windows; glazing can be added as needed.

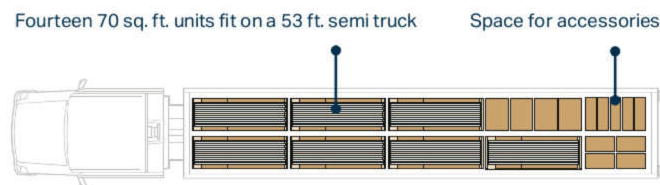
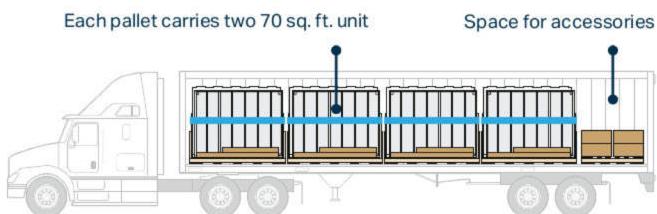
# DELIVERY TIME & LEADS

Pallet is the leader in rapid-response shelter villages. Our standard lead times are eight to twelve weeks, but we can often deliver on a much quicker timeline.

We recognize that though the city estimates purchasing and installing a mixture of individual shelter units and basic hygiene units (between 20-40 shelters and/or 3-5 hygiene units), these quantities may ultimately change. Because we build stock for inventory and have a production capacity of producing 7-10 shelters per day, we can easily accommodate changes to your estimate and respond quickly.

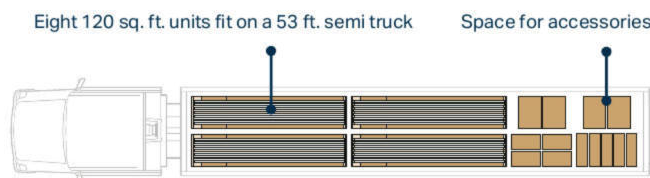
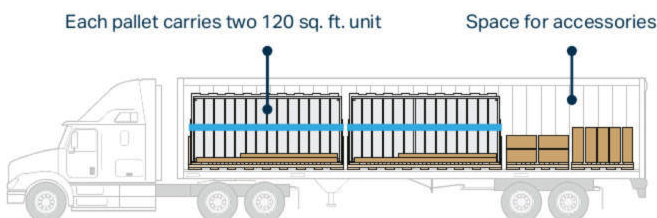
## S2 Sleeper 70

Our S2 Sleeper, the 70-square-foot structure we are proposing for your solution, will ship in a 53-foot trailer truck. Each trailer can hold 14 panelized shelters that will be assembled onsite. The shipping cost per shelter will fluctuate depending on the number of units that will be shipped to each location and when they are shipped. Because all units will not be shipped to the same location or at the same time, with remaining units to be received by November 1, 2026, shipping costs may fluctuate. We have estimated a shipping cost of \$1,200 per unit.



## S2 Sleeper 120

Our 120 square-foot structure has the same lead times as our 70 square-foot structure. Shipping cost per unit are estimated to be \$1,200 per unit as well.



## Hygiene Units

The delivery time for a hygiene unit is eight to twelve weeks. The fabrication of the hygiene units begins once we receive an order. As with the S2 Sleeper, shipping costs can fluctuate based on how many units are shipped per location as well as when the units are shipped. Estimated shipping costs are \$10,000 per unit. We have assumed one to two units will be shipped to each location.

# PRICE

---

In response to ADDENDUM #2 questions 5 and 13, we have included four different pricing options based on product selection for Pallet's S2 shelters. Each option includes delivery and installation costs and is priced per unit. The total cost will change depending on the specific product selected and the number of units required. Although we have provided four primary configurations, any combination of unit types and quantities can be customized to best meet the needs of the City of Pensacola.

For comparative purposes, the pricing below assumes the purchase of forty (40) sleeping shelters, three (3) 2-stall hygiene units, and two (2) 2-stall accessible hygiene units. These quantities are adjustable based on the final needs of the project. The Modular Shelter options for the City of Pensacola are listed below:

1. 70 SQ. FT. Sleeper Unit (Single occupancy)
  - Features: 120V 2,750-Watt Heater, A/C 8,000 BTU 120V, 1 Twin Bed, 1 Desk
  - Price: \$17,970
2. 70 SQ.FT. Sleeper Unit (Double occupancy)
  - Features: 120V 2750 Watt Heater, A/C 8,000 BTU 120V, 2 Beds, 1 Desk
  - Price: \$19,970
3. 70 SQ.FT. Sleeper Unit (Double occupancy, suitable for couples)
  - Features: 120V 2750 Watt Heater, A/C 8,000 BTU 120V, 1 Queen Bed, 1 Desk
  - Price: \$18,028
4. 120 SQ.FT. Sleeper Unit (Double occupancy, two beds, two desks)
  - Features: 240V 4,500 Watt Heater, A/C 8,000 BTU 120V, 2 Twin Beds, 2 Desks
  - Price: \$23,595

## **Customizability and Budget Flexibility:**

Our offerings allow flexibility for managing project budgets. Double occupancy may not be required for every shelter, enabling the City of Pensacola to choose the most suitable combination of structures that address both the community's diverse needs and the available budget. Additionally, while our 120 sq. ft. shelter provides the best fit for the project's specifications, the 70 sq. ft. options offer alternative configurations to accommodate different site and occupancy requirements.

Our current 70 sq. ft. shelter accommodates one XL Twin bed and one desk or one Queen bed and one desk. The Queen bed allows for double occupancy when a couple needs shelter. Our 120 sq. ft. shelter best meets the specifications of the RFP, as there is ample room for two beds and two desks for each shelter.

Pallet offers additional product choices to manage your budget, giving the City of Pensacola the widest possible selection and combination of structures to accommodate the different needs and budget of each site.



### Detailed Pricing Breakdown:

The following section provides a comprehensive breakdown of the pricing for each of the four shelter options. These estimates are based on the assumed quantity of units and include delivery and installation costs. Each option is designed to provide flexibility in meeting the city's specific needs, with variations in size, occupancy, and features to allow for customization based on project goals and budget.

#### Option 1.

ITEM NO.	EST. QTY	ITEM DESCRIPTION (INCLUDING SQ. FT.)	PRICE PER UNIT	DELIVERY COST TO DESTINATION	INSTALLATION COSTS
1	40	S2-70 SQFT. Sleeper with 120v 2750 Watt Heater, A/C 8,000 BTU 120V, 1 Twin Bed, 1 Desk	\$17,970.00	\$1,200.00	\$1,100.00
2	3	2-Stall BR Unit (Toilet, Shower, Sink)	\$44,995.00	\$10,000.00	\$0.00
3	2	2-Stall Accessible BR Unit (1 Full Bath, 1 Admin Half Bath)	\$44,995.00	\$10,000.00	\$0.00
TOTAL PRICE			\$1,085,775.00		

#### Option 2.

ITEM NO.	EST. QTY	ITEM DESCRIPTION (INCLUDING SQ. FT.)	PRICE PER UNIT	DELIVERY COST TO DESTINATION	INSTALLATION COSTS
1	40	S2-70 SQFT. Sleeper with 120v 2750 Watt Heater, A/C 8,000 BTU 120V, 2 Beds, 1 Desk	\$19,970.00	\$1,200.00	\$1,100.00
2	3	2-Stall BR Unit (Toilet, Shower, Sink)	\$44,995.00	\$10,000.00	\$0.00
3	2	2-Stall Accessible BR Unit (1 Full Bath, 1 Admin Half Bath)	\$44,995.00	\$10,000.00	\$0.00
TOTAL PRICE			\$1,065,775.00		

Note: this option requires modifications to our existing design to accommodate two beds

#### Option 3.

ITEM NO.	EST. QTY	ITEM DESCRIPTION (INCLUDING SQ. FT.)	PRICE PER UNIT	DELIVERY COST TO DESTINATION	INSTALLATION COSTS
1	40	S2-70 SQFT. Sleeper with 120v 2750 Watt Heater, A/C 8,000 BTU 120V, 1 Queen Bed, 1 Desk	\$18,028.00	\$1,200.00	\$1,100.00
2	3	2-Stall BR Unit (Toilet, Shower, Sink)	\$44,995.00	\$10,000.00	\$0.00
3	2	2-Stall Accessible BR Unit (1 Full Bath, 1 Admin Half Bath)	\$44,995.00	\$10,000.00	\$0.00
TOTAL PRICE			\$1,088,095.00		

#### Option 4.

ITEM NO.	EST. QTY	ITEM DESCRIPTION (INCLUDING SQ. FT.)	PRICE PER UNIT	DELIVERY COST TO DESTINATION	INSTALLATION COSTS
1	40	S2-120 SQFT. Sleeper with 240v 4,500 Watt Heater, A/C 8,000 BTU 120V, 2 Twin Bed, 2 Desks	\$23,595.00	\$1,200.00	\$1,100.00
2	3	2-Stall BR Unit (Toilet, Shower, Sink)	\$44,995.00	\$10,000.00	\$0.00
3	2	2-Stall Accessible BR Unit (1 Full Bath, 1 Admin Half Bath)	\$44,995.00	\$10,000.00	\$0.00
TOTAL PRICE			\$1,310,775.00		

#### Please Note:

- If number of units delivered to any one site is ten or less, per unit installation costs will be \$1,500.
- Tax is not included in Total Price

We look forward to working with you to tailor the shelter solution that best suits the City's needs while remaining within the project's budget constraints.

# WARRANTY

---

## PALLET LIMITED WARRANTY

The Pallet Shelter model purchased by you ("Shelter") is designed to provide a safe, reliable, and compact shelter for use as temporary housing.

### What does this Limited Warranty cover?

This Limited Warranty only covers defects in materials and workmanship of the Pallet Shelter and the following list of products under Normal Use and Maintenance (each, a **"Defect"**) for the "Warranty Period" as defined below (collectively with the Shelter, the **"Products"**):

- 2-Stall Bathroom, including walls, flooring, roof, door(s) and door handle(s), and windows
- ADA Full Bathroom, including walls, flooring, roof, door(s) and door handle(s), and windows
- S2-70 Sq Ft Structure including walls, flooring, roof, door(s) and door handle(s), and windows
- S2-120 Sq Ft Structure including walls, flooring, roof, door and door handle, and windows

**"Normal Use and Maintenance"** includes the use and habitation of the Shelter by no more than four (4) adults on a level and stable outdoor surface, while following the Shelter User Manual and Product Instructions provided by Pallet to you from time to time. Normal Use and Maintenance does not include any other use or maintenance not specified herein.

### What is the Coverage period?

This Limited Warranty starts on the date of delivery of the Shelter and lasts for two (2) years (the "Warranty Period"). The Warranty Period for the Shelter electrical system and components shall be thirty (30) days from the Shelter's connection to electrical utilities. The Warranty Period is not extended if we repair or replace a Product. We may change the availability of this Limited Warranty at our discretion, but any changes will not be retroactive.

### When does this coverage period begin?

The Warranty Period begins when the Product is delivered to either a project site or storage site.

### Is anything required to trigger my rights under the warranty?

Yes. Your rights under this Limited Warranty will not take effect and will not be available to you unless and until you participate in the completion of a shelter inspection checklist within three (3) days after assembly of a Shelter. If Pallet assembles the Shelter, Pallet will initiate this process and you will be required to provide a representative to participate in the inspection. If you choose to assemble your own Shelter, you must complete and supply to Pallet a Shelter inspection checklist within the required time. A Pallet hygiene or laundry unit must be inspected within seven (7) days of connection to water and electrical utilities. Any failure to participate in or conduct the required inspection checklist shall not toll, delay, or stay the applicable Warranty Period, which shall begin running on the date of delivery as described herein.

### How do you obtain warranty service?

To obtain warranty service under this Limited Warranty for a Defect, you must first contact us in writing at [support@palletshelter.com](mailto:support@palletshelter.com) prior to the expiration of the Warranty Period and within thirty (30) days of discovering the Defect, specifying (a **"Warranty Claim"**):

The entire Limited Warranty can be found on our website, [www.palletshelter.com/warranty](http://www.palletshelter.com/warranty), or provided to you upon request.



# S2 SLEEPER | (70 sq. ft. | 6.5 m2)



The Pallet® S2 Sleeper is our new line in safe, dignified, rapid-response shelter solutions. Our industry-leading design features a mono-pitch roof, smooth exterior and interior panels, improved energy efficiency, and protection from the elements. The S2 Sleeper is also designed for rapid deployment and assembly.

**The 70 sq. ft. (6.5 m2) model is perfect for one person or a couple.**



## Standard Features

- 1 Residential windows with advanced Low-E insulated glass
- 2 Integrated customizable wire shelving system
- 3 120V convenience plugs
- 4 Interior LED lighting
- 5 Smoke/CO detector combo unit
- 6 Pedestal leveling system
- 7 Heater and A/C units

## Optional

Freestanding Twin XL bed frame and mattress with bedbug-resistant cover

Freestanding desk

Programmable digital keypad entry

Generator Quick-Connect enables generator compatibility



## Benefits

**Rapid:** Our new patent pending connection system has fewer bolts, bringing installation time down to under an hour. This means an entire village community of interim shelter can be built in a day.

**Safe:** Each shelter is equipped with a solid core front door with kick plate and peephole; robust fire, snow, and wind ratings; and an egress window and fire extinguisher in case of emergency.

**Dignified:** Locking doors, residential windows, easily accessed interior lighting, and climate control options offer residents a comfortable and dignified space to plan their next steps.

## Technical Specifications

Interior Dimensions	10' W x 7' D x 6'9½" to 7'8" H	304.8 cm W x 213.4 cm D x 207 cm to 233.7 cm H
Square Footage	70 sq. ft.	6.5 m2
Shelter Weight	Approx. 900 lb.	Approx. 408 kg
Wind Rating	Up to 155 mph (exposure C) Up to 170 mph (exposure B)	Up to 250 kmh (exposure C) Up to 274 kmh (exposure B)
Design Snow Load	Up to 40 lb. per sq. ft. (Standard) Up to 80 lb. per sq. ft. (High Load)	1.9 kPa (Standard) 3.83 kPa (High Load)



Class B Fire rating for panel skin  
Class C Fire rating for full assembly



Our 2750W & 4500W climate control system can maintain comfortable interior temperatures when the temperature outside drops as low as -40 F | -40 C and rises up to 120 F | 48 C



- **Material:** Structural insulated panel
- **Lifespan:** 15 - 20 years
- **Warranty:** Standard manufacturer warranty

# S2 SLEEPER (70 SQ. FT.)



## Standard Product Specifications

### Dimensions

DESCRIPTION	STANDARD SPECIFICATIONS	
Exterior Dimensions, Eve-to-Eve	10'6¼" W x 7'6 1/2" D	320.7 cm W x 229.9 cm D
Exterior Dimensions, Wall-to-Wall	10'3" W x 7'3" D	312.4 cm W x 221 cm D
Interior Dimensions, Wall-to-Wall	10' W x 7' D	304.8 cm W x 213.4 cm D
Overall Height	8'7½" H	262.9cm H
Min/Max Ceiling Height	6'9½" to 7'8" H	207 cm to 233.7 cm
Interior Square Footage	70 sq. ft.	6.5 m2

### Means of Egress & Ventilation

DESCRIPTION	STANDARD SPECIFICATIONS	
Solid Core Door	1 @ 36" x 80"	1 @ 91.4 cm x 203.2 cm
Casement Egress Window	1 @ 36" x 36"	1 @ 91.4 cm x 91.4 cm
Additional Double Pane Insulated Windows	1 @ 24" x 30"	1 @ 61 cm x 76.2 cm

### Weights & Ratings

DESCRIPTION	STANDARD SPECIFICATIONS	
Weight of Unit (Including Standard Features & Max Occupancy Beds)	Approx. 900 lb.	Approx. 408 kg
Wind Rating	Up to 155 mph (exposure C) Up to 170 mph (exposure B)	Up to 250 kmh (exposure C) Up to 274 kmh (exposure B)
Tie Down Requirement per Corner	Up to 1,500 lb.	Up to 680 kg
Design Snowload Rating	Up to 40 lb. per sq. ft. (Standard) Up to 80 lb. per sq. ft. (High Load)	1.9 kPa (Standard) 3.83 kPa (High Load)
Floor Live Load Rating	Up to 40 lb. per sq. ft.	Up to 1.9kPa
Fire Rating	ASTEM-E84 Class B Surface   Class C Full System	
Max # of Beds and Size (Twins, Fulls, etc)	1 Twin XL	
Twin XL Bed Weight Limit	1,500 lbs	680 kg

### Delta T

DESCRIPTION	STANDARD SPECIFICATIONS	
120V 2,750W Heater	90F	50C
240V 4,500W Heater	120F	66C

### Materials and Construction

DESCRIPTION	STANDARD MATERIALS OF CONSTRUCTION
Floor/Base	Welded aluminum frame with foam core composite SIP panel
Roof & Wall Panel	Foam core composite SIP panel
Windows	Vinyl frame with dual pane Low-E glass

Panel Thickness

DESCRIPTION	STANDARD MATERIALS OF CONSTRUCTION	
Walls	1.5"	3.8 cm
Roof	2"	5.1 cm
Floor	0.5"	1.3 cm

Infrastructure Requirements

DESCRIPTION	STANDARD SPECIFICATIONS
Electrical Connection	120V or 240V Service Options Available
Tie Down Requirement per Corner	Up to 1,500 lb. / 680 kg (Depends on local wind rating)

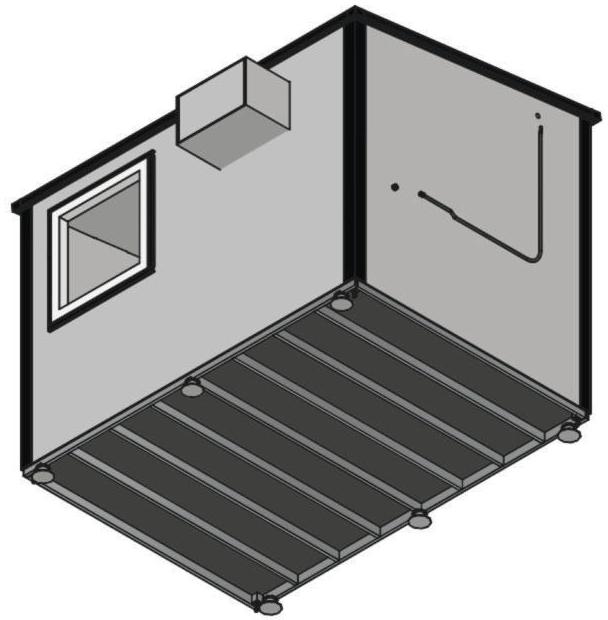
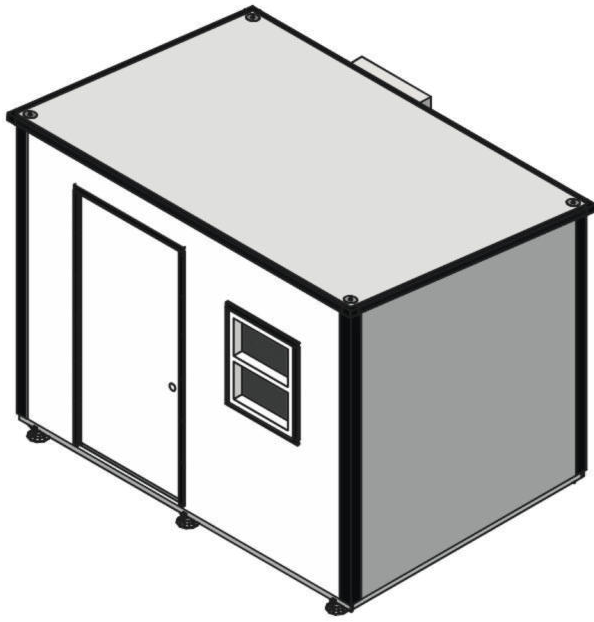
\*NOTE: For installation on different soil types, please refer to the infrastructure guide.

Standard Features

- Locking solid core door w/ master key
- Emergency egress casement window
- Vinyl frame with dual pane Low-E glass windows
- Adjustable shelving
- Three 120V outlets
- Interior LED lighting
- Hardwired CO/smoke detector with battery backup
- Wall-mounted fire extinguisher
- Exterior-mounted breaker box
- Wall mounted Pic-A-Watt 1,250W-2,750W or 2,250W-4,500W heater
- Thru-wall 8,000 BTU A/C unit

Optional Accessory Features

- Desk
- Twin XL bed frame
- **Twin XL** 'Relief Bed' 38"x 80" (96.5cm x 203.2cm) mattress
- Programmable digital keypad entry
- Exterior light
- Generator Quick-Connect



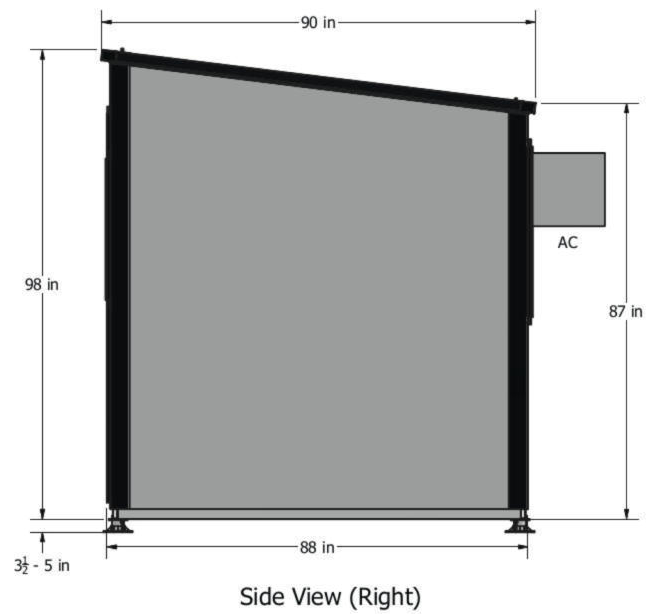
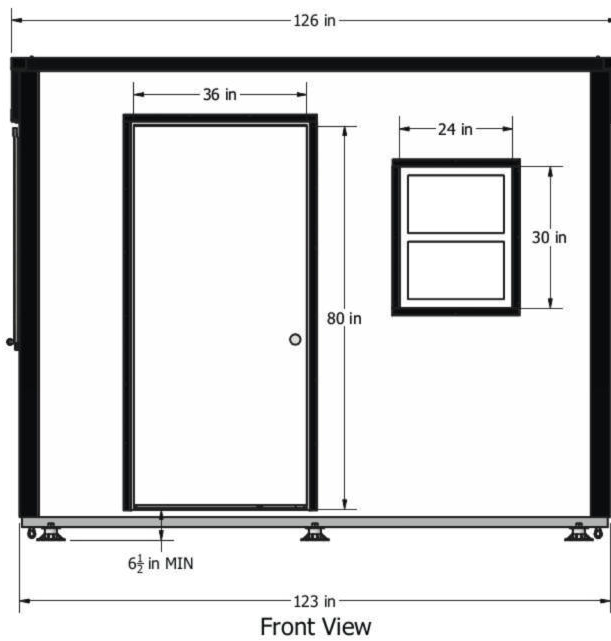
DRAWN BY	Trevor Russell
DATE	10/3/2023

PROPRIETARY AND CONFIDENTIAL  
THE INFORMATION CONTAINED IN THIS  
DRAWING IS THE SOLE PROPERTY OF  
Pallet SPC LLC. ANY REPRODUCTION IN  
PART OR AS A WHOLE WITHOUT THE  
WRITTEN PERMISSION OF Pallet SPC IS  
PROHIBITED.

TITLE	S2 70 w/ Accessories
Released	

REV	G
-----	---

SHEET 1 OF 7
--------------



DRAWN BY	Trevor Russell
DATE	10/3/2023

PROPRIETARY AND CONFIDENTIAL  
THE INFORMATION CONTAINED IN THIS  
DRAWING IS THE SOLE PROPERTY OF  
Pallet SPC LLC. ANY REPRODUCTION IN  
PART OR AS A WHOLE WITHOUT THE  
WRITTEN PERMISSION OF Pallet SPC IS  
PROHIBITED.

TITLE	S2 70 w/ Accessories
Released	

REV	G
-----	---

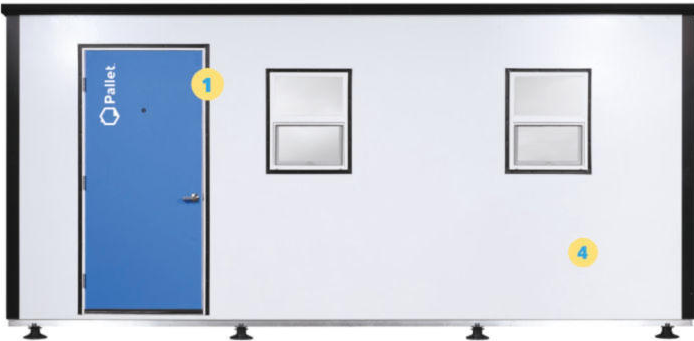
SHEET 2 OF 7
--------------



# S2 SLEEPER | (120 sq. ft. | 11.15 m2)

The Pallet™ S2 Sleeper is our industry-leading line of safe, durable, rapid-response shelters. Designed for rapid deployment and assembly, the S2 Sleeper also features energy efficient construction, smooth exterior and interior panels, and climate control options fit for any conditions.

**The 120 sq. ft. (11.15 m2) is a comfortable and dignified space for two people or families to plan their future, and can also be used as office space and storage for onsite service provider staff.**



## Standard Features

- 1 Durable solid core residential exterior door and frame
- 2 Structurally insulated FRP walls
- 3 Heater and A/C units
- 4 Inorganic mold-, mildew-, and pest-resistant construction materials
- 5 Interior LED lighting
- 6 Smoke/CO detector combo unit
- 7 Integrated customizable wire shelving system

## Optional

Freestanding Twin XL bed frame and mattress with bedbug-resistant cover

Freestanding desk

Programmable digital keypad entry

## Benefits

**Safe:** Our patent pending structural panel system creates tight corner fittings and energy efficiency. Robust fire, wind, and snow load ratings are fit for even extreme weather and storm-prone locales.

**Adaptable:** An adjustable pedestal leveling system makes the S2 Sleeper ready for a variety of terrains, and the tie-down system anchors the roof to the floor for structural integrity in variable conditions.

**Versatile:** In addition to its use as private, comfortable sleeping quarters for two people or families, the 120 square foot (11.15 m2) model of the S2 Sleeper can also be converted as office and storage space.

## Technical Specifications

Interior Dimensions	17'2" W x 7' D x 6'9½" to 7'8" H	523.2 cm W x 213.4 cm D x 207 cm to 233.7 cm H
Square Footage	120 sq. ft.	11.15 m2
Shelter Weight	1,300 lb.	590 kg
Wind Rating	Up to 155 mph sustained	Up to 250 kmh sustained
Snow Load Rating	40 lb. per sq. ft.	1.9 kPa



Class B Fire rating for panel skin  
Class C Fire rating for full assembly



Our 2750W & 4500W climate control system can maintain comfortable interior temperatures when the temperature outside drops as low as -40 F | -40 C and rises up to 120 F | 48 C



- **Material:** Structural insulated panel
- **Lifespan:** 15 - 20 years
- **Warranty:** Standard manufacturer warranty

# S2 SLEEPER (120 SQ. FT.)



## Standard Product Specifications

### Dimensions

DESCRIPTION	STANDARD SPECIFICATIONS	
Exterior Dimensions, Eve-to-Eve	17'8¼" W x 7'6½" D	539.1 cm W x 229.9 cm D
Exterior Dimensions, Wall-to-Wall	17'5" W x 7'3" D	530.9 cm W x 221 cm D
Interior Dimensions, Wall-to-Wall	17'2" W x 7' D	523.2 cm W x 213.4 cm D
Overall Height	8'7½" H	262.9 cm H
Min/Max Ceiling Height	6'9½" to 7'8" H	207 cm to 233.7 cm
Interior Square Footage	120 sq. ft.	11.15 m2

### Means of Egress & Ventilation

DESCRIPTION	STANDARD SPECIFICATIONS	
Solid Core Door	1 @ 36" x 80"	1 @ 91.4 cm x 203.2 cm
Casement Egress Window	1 @ 36" x 36"	1 @ 91.4 cm x 91.4 cm
Additional Double Pane Insulated Windows	2 @ 24" x 30"	2 @ 61 cm x 76.2 cm

### Weights & Ratings

DESCRIPTION	STANDARD SPECIFICATIONS	
Weight of Unit (Including Standard Features & Max Occupancy Beds)	1,300 lb.	590 kg
Wind Rating	Up to 155 mph (exposure C) Up to 170 mph (exposure B)	Up to 250 kmh (exposure C) Up to 274 kmh (exposure B)
Tie Down Requirement per Corner	Up to 1,500 lb.	Up to 680 kg
Design Snowload Rating	Up to 40 lb. per sq. ft. (Standard) Up to 80 lb. per sq. ft. (High Load)	Up to 1.9 kPa (Standard) Up to 3.83 kPa (High Load)
Floor Live Load Rating	Up to 40 lb. per sq. ft.	Up to 1.9kPa
Fire Rating	ASTEM-E84 Class B Surface   Class C Full System	
Max # of Beds and Size (Twins, Fulls, etc)	2 Twin XL or 1 Full	
Twin XL Bed Weight Limit	1,500 lbs	680 kg

### Delta T

DESCRIPTION	STANDARD SPECIFICATIONS	
120V 2,750W Heater	90F	50C
240V 4,500W Heater	120F	66C

### Materials and Construction

DESCRIPTION	STANDARD MATERIALS OF CONSTRUCTION
Floor/Base	Welded aluminum frame with foam core composite SIP panel
Roof & Wall Panel	Foam core composite SIP panel
Windows	Vinyl frame with dual pane Low-E glass



## Panel Thickness

DESCRIPTION	STANDARD MATERIALS OF CONSTRUCTION	
Walls	1.5"	3.8 cm
Roof	2"	5.1 cm
Floor	0.5"	1.3 cm

## Infrastructure Requirements

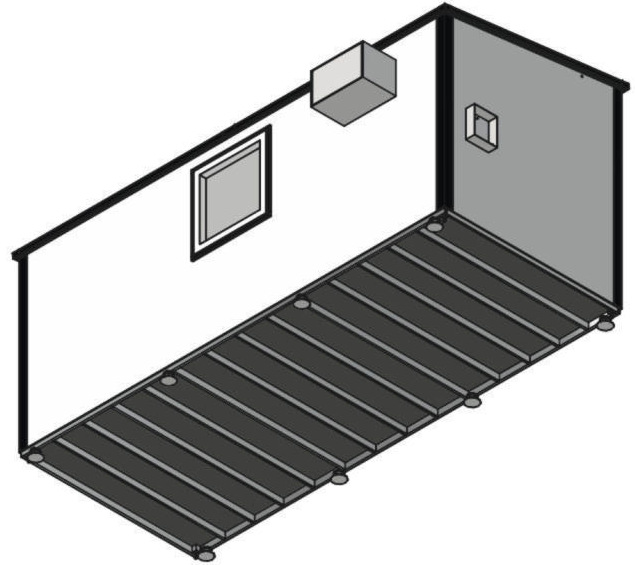
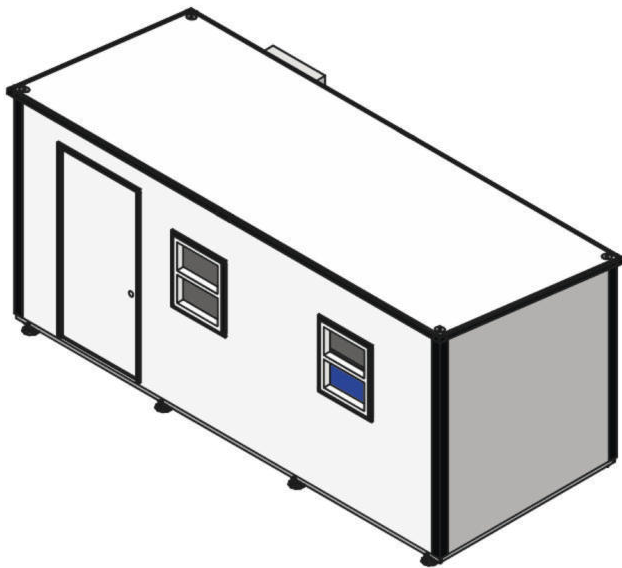
DESCRIPTION	STANDARD SPECIFICATIONS
Electrical Connection	120V or 240V Service Options Available
Tie Down Requirement per Corner	Up to 1,500 lb. / 680 kg (Depends on local wind rating)

## Standard Features

- Locking solid core door w/ master key
- Emergency egress casement window
- Vinyl frame with dual pane Low-E glass windows
- Adjustable shelving
- Three 120V outlets
- Interior LED lighting
- Hardwired CO/smoke detector with battery backup
- Wall-mounted fire extinguisher
- Exterior-mounted breaker box
- Wall mounted Pic-A-Watt 1,250W-2,750W or 2,250W-4,500W heater
- Thru-wall 8,000 BTU A/C unit

## Optional Accessory Features

- Desk
- Twin XL bed frame
- Twin XL 'Relief Bed' 38"x 80" (96.5cm x 203.2cm) mattress
- Programmable digital keypad entry
- Exterior light



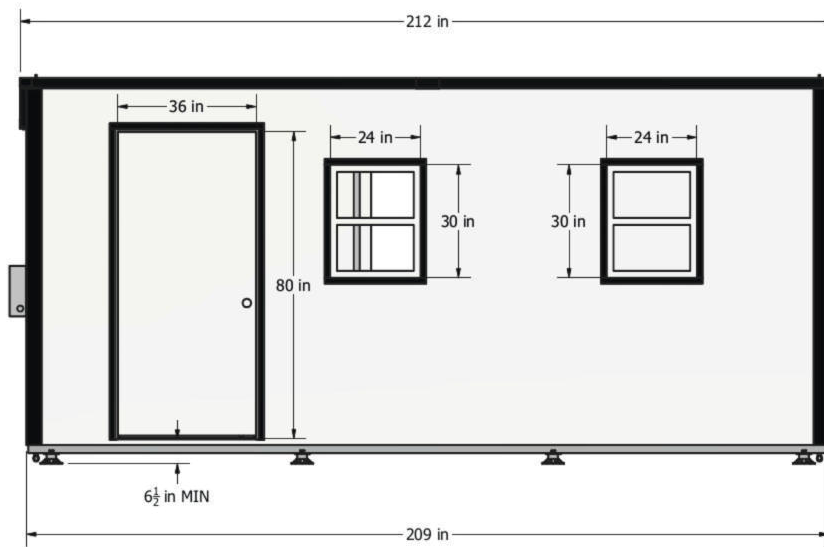
DRAWN BY: Trevor Russell  
DATE: 10/3/2023

PROPRIETARY AND CONFIDENTIAL  
THE INFORMATION CONTAINED IN THIS  
DRAWING IS THE SOLE PROPERTY OF  
Pallet SPC LLC. ANY REPRODUCTION IN  
PART OR AS A WHOLE WITHOUT THE  
WRITTEN PERMISSION OF Pallet SPC IS  
PROHIBITED.

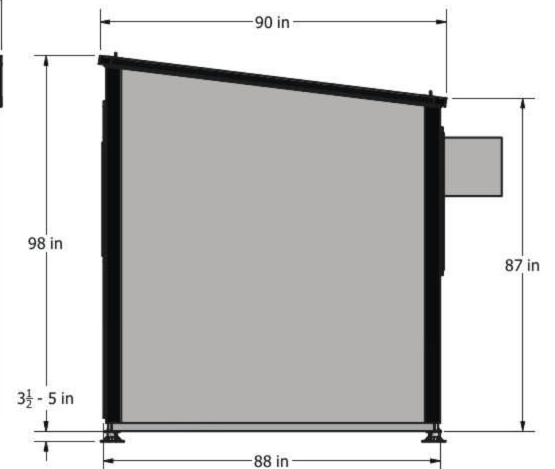
TITLE  
120 Sales Overview

REV  
E

Released SHEET 1 OF 7



Front View



Side View (Right)



DRAWN BY: Trevor Russell  
DATE: 10/3/2023

PROPRIETARY AND CONFIDENTIAL  
THE INFORMATION CONTAINED IN THIS  
DRAWING IS THE SOLE PROPERTY OF  
Pallet SPC LLC. ANY REPRODUCTION IN  
PART OR AS A WHOLE WITHOUT THE  
WRITTEN PERMISSION OF Pallet SPC IS  
PROHIBITED.

TITLE  
120 Sales Overview

REV  
E

Released SHEET 2 OF 7

# TWO-STALL HYGIENE

Based on the proven durability and longevity of our shelter design, this hygiene structure provides a private, lockable space with flushable toilet, a sink, and a shower in each of its two rooms. Easy to install, clean, and maintain, the Two-Stall Hygiene unit is an essential part of any dignified shelter community.



## Standard Features

- 1 Standard flush toilets and hot/cold water sinks and showers
- 2 Standard sewer and electrical hookups for easy installation
- 3 Locking doors
- 4 Heat, A/C, exhaust fan, and humidity sensor
- 5 Slip-resistant floors
- 6 Resistant to mold, mildew, and pests

## Benefits

**Easy to Maintain:** Simple layout with easy-to-clean materials and surfaces.

**Dignified:** The privacy and comfort of lockable doors and standard residential fixtures.

**Pre-Built:** All units come fully assembled, meaning quick and convenient installation.



## Technical Specifications

Interior Dimensions (Stalls)	6'8½" W x 7'5½" D x 7'6" to 8'10" H	204.7 cm W x 214.9 cm D x 228.6 cm to 269.2 cm H
Square Footage	100 sq. ft.	9.3 m2
Shelter Weight	Approx. 2234 lb.	Approx. 1013 kg
Wind Rating	Up to 155 mph (exposure C) Up to 170 mph (exposure B)	Up to 250 kmh (exposure C) Up to 274 kmh (exposure B)
Design Snow Load	Up to 80 lb. per sq. ft.	3.83 kPa



Class B Fire rating for panel skin  
Class C Fire rating for full assembly



- **Material:** Structural insulated panel
- **Lifespan:** 15 - 20 years
- **Warranty:** Standard manufacturer warranty

# TWO-STALL HYGIENE



## Standard Product Specifications

### Dimensions

DESCRIPTION	STANDARD SPECIFICATIONS	
Exterior Dimensions, Eve-to-Eve	13'11 <sup>5</sup> / <sub>8</sub> " W x 8'5 <sup>1</sup> / <sub>2</sub> " D	425.7 cm W x 257.8 cm D
Exterior Dimensions, Wall-to-Wall	13'9 <sup>7</sup> / <sub>8</sub> " W x 7'9 <sup>3</sup> / <sub>4</sub> " D	421.3 cm W x 238.1 cm D
Interior Dimensions, Wall-to-Wall, Stalls	6'8 <sup>5</sup> / <sub>8</sub> " W x 7'5 <sup>5</sup> / <sub>8</sub> " D	204.7 cm W x 214.9 cm D
Overall Height	10' 2" H	309.9 cm H
Min/Max Ceiling Height	7'6" to 8'10" H	228.6 cm to 269.2 cm H
Interior Square Footage	100 sq. ft.	9.3 m2

### Means of Egress & Ventilation

DESCRIPTION	STANDARD SPECIFICATIONS	
Panel Door	(2) 36" x 80" Panel Doors	1 @ 91.4 cm x 203.2 cm
Exhaust Fan with Humidity Sensor	2	

### Weights & Ratings

DESCRIPTION	STANDARD SPECIFICATIONS	
Weight of Unit (Including Standard Features)	Approx. 2,234 lb.	Approx. 1013 kg
Wind Rating	Up to 155 mph (exposure C) Up to 170 mph (exposure B)	Up to 250 kmh (exposure C) Up to 274 kmh (exposure B)
Tie Down Requirement per Corner	Up to 1,800 lb.	Up to 816.47 kg
Design Snow load Rating	Up to 80 lb. per sq. ft.	Up to 3.83 kPa
Floor Live Load Rating	Up to 40 lb. per sq. ft.	Up to 1.9 kPa
Fire Rating	ASTEM-E84 Class B Surface   Class C Full System	

### Materials and Construction

DESCRIPTION	STANDARD MATERIALS OF CONSTRUCTION
Floor/Base	Welded aluminum frame with foam core composite SIP panel
Roof & Wall Panel	Foam core composite SIP panel with aluminum sub frame
Windows (Landry Room Only)	Vinyl frame with dual pane Low-E glass

Panel Thickness

DESCRIPTION		STANDARD MATERIALS OF CONSTRUCTION	
	Walls	1 3/4"	4.4 cm
	Roof	1 3/4"	4.4 cm
	Floor	1/2"	1.3 cm

Infrastructure Requirements

DESCRIPTION		STANDARD SPECIFICATIONS
2-Stall Hygiene		
	Electrical Connection	240V 1 PH
	Tie Down Requirement per Corner	Up to 1,800 lb. / 1.9 kPa
	Water	1/2" NPT
	Sewer	(8) PVC Drains

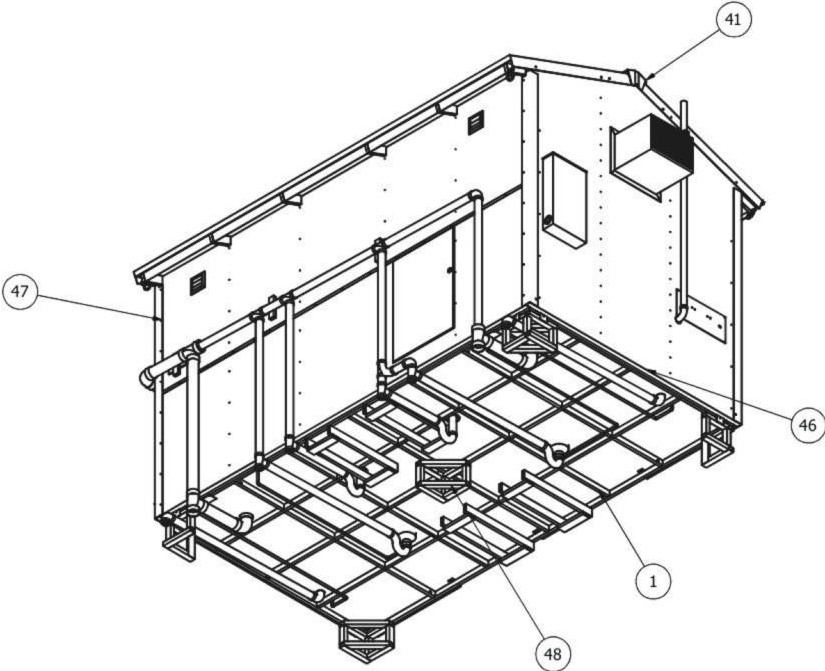
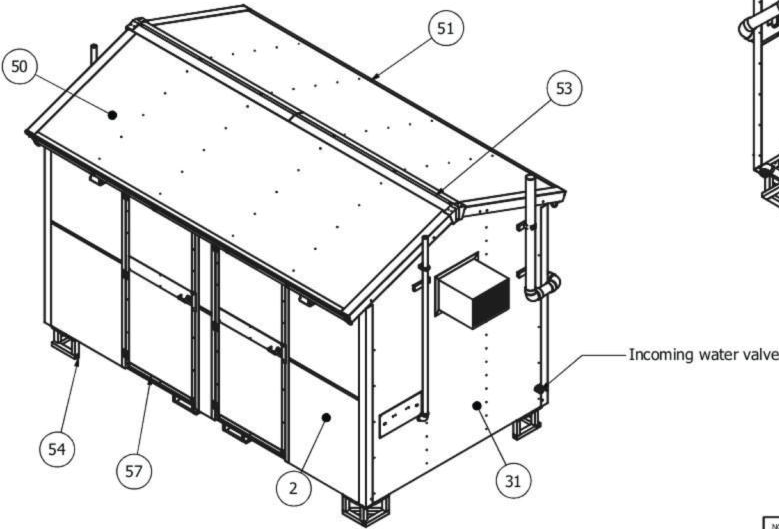
Standard Features

- (2) 36"x 80" panel doors
- (2) 120V outlets
- (2) 4ft LED strip lights
- (2) Photocell controlled exterior LED lights
- (2) Combination heater/AC units (3,850 BTU for heat, 7,500 BTU for cooling)
- (2) Exhaust fans with humidity sensor
- (2) Accessible Toilets, (2) showers, (2) sinks
- On demand (tankless) electric water heater



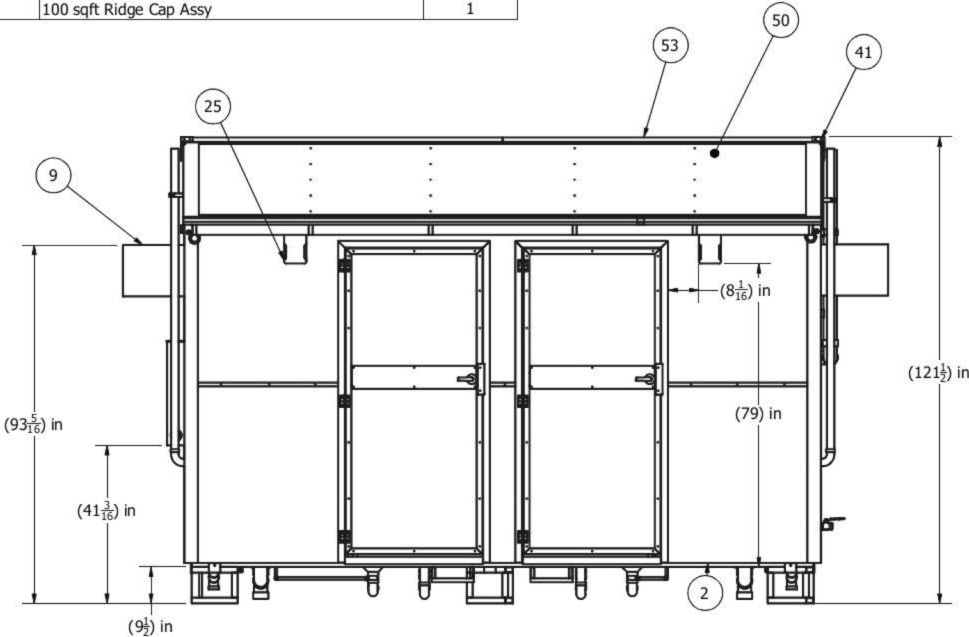
BOM			
ITEM	PART NUMBER	DESCRIPTION	QTY
1	31081	2 Stall Base Assembly	1
2	31135	2 Stall Front Wall Final Assy	1
31	31164	Final Assembly Side Wall 2 Stall Right	1
41	11592	Ridge Cap End Cap	2
46	Side Wall 2 Stall	Final Assembly Side Wall Left 2 Stall Ridge	1
47	34013	Wall Back ADA 2 Stall - 2 Stall Standard	1
48	400041	Hygiene Stand Full Assy Center	1
50	50125	Final Assembly Roof Front Hygiene HD	1
51	50127	Final Assembly Roof Back Hygiene HD	1
53	10039	100 sqft Ridge Cap Assy	1
54	20117	Hygiene Stand Full Assy	4
57	10476	Final Assembly Hygiene Door	2

REVISION HISTORY		
REV	DESCRIPTION	DATE
A	Original Release	9/10/2024



<div><div><div></div><div></div><div></div><div></div><div></div><div></div><div></div><div></div><div></div><div></div><div></div><div></div><div></div><div></div><div></div><div></div><div></div><div></div><div></div><div></div><div></div><div></div><div></div><div></div><div></div><div></div><div></div><div></div><div></div><div></div><div></div><div></div><div></div><div></div><div></div><div></div><div></div><div></div><div></div><div></div><div></div><div></div><div></div><div></div><div></div><div></div><div></div><div></div><div></div><div></div><div></div><div></div><div></div><div></div><div></div><div></div><div></div><div></div><div></div><div></div><div></div><div></div><div></div><div></div><div></div><div></div><div></div><div></div><div></div><div></div><div></div><div></div><div></div><div></div><div></div><div></div><div></div><div></div><div></div><div></div><div></div><div></div><div></div><div></div><div></div><div></div><div></div><div></div><div></div><div></div><div></div><div></div><div></div><div></div><div></div><div></div><div></div><div></div><div></div><div></div><div></div><div></div><div></div><div></div><div></div><div></div><div></div><div></div><div></div><div></div><div></div><div></div><div></div><div></div><div></div><div></div><div></div><div></div><div></div><div></div><div></div><div></div><div></div><div></div><div></div><div></div><div></div><div></div><div></div><div></div><div></div><div></div><div></div><div></div><div></div><div></div><div></div><div></div><div></div><div></div><div></div><div></div><div></div><div></div><div></div><div></div><div></div><div></div><div></div><div></div><div></div><div></div><div></div><div></div><div></div><div></div><div></div><div></div><div></div><div></div><div></div><div></div><div></div><div></div><div></div><div></div><div></div><div></div><div></div><div></div><div></div><div></div><div></div><div></div><div></div><div></div><div></div><div></div><div></div><div></div><div></div><div></div><div></div><div></div><div></div><div></div><div></div><div></div><div></div><div></div><div></div><div></div><div></div><div></div><div></div><div></div><div></div><div></div><div></div><div></div><div></div><div></div><div></div><div></div><div></div><div></div><div></div><div></div><div></div><div></div><div></div><div></div><div></div><div></div><div></div><div></div><div></div><div></div><div></div><div></div><div></div><div></div><div></div><div></div><div></div><div></div><div></div><div></div><div></div><div></div><div></div><div></div><div></div><div></div><div></div><div></div><div></div><div></div><div></div><div></div><div></div><div></div><div></div><div></div><div></div><div></div><div></div><div></div><div></div><div></div><div></div><div></div><div></div><div></div><div></div><div></div><div></div><div></div><div></div><div></div><div></div><div></div><div></div><div></div><div></div><div></div><div></div><div></div><div></div><div></div><div></div><div></div><div></div><div></div><div></div><div></div><div></div><div></div><div></div><div></div><div></div><div></div><div></div><div></div><div></div><div></div><div></div><div></div><div></div><div></div><div></div><div></div><div></div><div></div><div></div><div></div><div></div><div></div><div></div><div></div><div></div><div></div><div></div><div></div><div></div><div></div><div></div><div></div><div></div><div></div><div></div><div></div><div></div><div></div><div></div><div></div><div></div><div></div><div></div><div></div><div></div><div></div><div></div><div></div><div></div><div></div><div></div><div></div><div></div><div></div><div></div><div></div><div></div><div></div><div></div><div></div><div></div><div></div><div></div><div></div><div></div><div></div><div></div><div></div><div></div><div></div><div></div><div></div><div></div><div></div><div></div><div></div><div></div><div></div><div></div><div></div><div></div><div></div><div></div><div></div><div></div><div></div><div></div><div></div><div></div><div></div><div></div><div></div><div></div><div></div><div></div><div></div><div></div><div></div><div></div><div></div><div></div><div></div><div></div><div></div><div></div><div></div><div></div><div></div><div></div><div></div><div></div><div></div><div></div><div></div><div></div><div></div><div></div><div></div><div></div><div></div><div></div><div></div><div></div><div></div><div></div><div></div><div></div><div></div><div></div><div></div><div></div><div></div><div></div><div></div><div></div><div></div><div></div><div></div><div></div><div></div><div></div><div></div><div></div><div></div><div></div><div></div><div></div><div></div><div></div><div></div><div></div><div></div><div></div><div></div><div></div><div></div><div></div><div></div><div></div><div></div><div></div><div></div><div></div><div></div><div></div><div></div><div></div><div></div><div></div><div></div><div></div><div></div><div></div><div></div><div></div><div></div><div></div><div></div><div></div><div></div><div></div><div></div><div></div><div></div><div></div><div></div><div></div><div></div><div></div><div></div><div></div><div></div><div></div><div></div><div></div><div></div><div></div><div></div><div></div><div></div><div></div><div></div><div></div><div></div><div></div><div></div><div></div><div></div><div></div><div></div><div></div><div></div><div></div><div></div><div></div><div></div><div></div><div></div><div></div><div></div><div></div><div></div><div></div><div></div><div></div><div></div><div></div><div></div><div></div><div></div><div></div><div></div><div></div><div></div><div></div><div></div><div></div><div></div><div></div><div></div><div></div><div></div><div></div><div></div><div></div><div></div><div></div><div></div><div></div><div></div><div></div><div></div><div></div><div></div><div></div><div></div><div></div><div></div><div></div><div></div><div></div><div></div><div></div><div></div><div></div><div></div><div></div><div></div><div></div><div></div><div></div><div></div><div></div><div></div><div></div><div></div><div></div><div></div><div></div><div></div><div></div><div></div><div></div><div></div><div></div><div></div><div></div><div></div><div></div><div></div><div></div><div></div><div></div><div></div><div></div><div></div><div></div><div></div><div></div><div></div><div></div><div></div><div></div><div></div><div></div><div></div><div></div><div></div><div></div><div></div><div></div><div></div><div></div><div></div><div></div><div></div><div></div><div></div><div></div><div></div><div></div><div></div><div></div><div></div><div></div><div></div><div></div><div></div><div></div><div></div><div></div><div></div><div></div><div></div><div></div><div></div><div></div><div></div><div></div><div></div><div></div><div></div><div></div><div></div><div></div><div></div><div></div><div></div><div></div><div></div><div></div><div></div><div></div><div></div><div></div><div></div><div></div><div></div><div></div><div></div><div></div><div></div><div></div><div></div><div></div><div></div><div></div><div></div><div></div><div></div><div></div><div></div><div></div><div></div><div></div><div></div><div></div><div></div><div></div><div></div><div></div><div></div><div></div><div></div><div></div><div></div><div></div><div></div><div></div><div></div><div></div><div></div><div></div><div></div><div></div><div></div><div></div><div></div><div></div><div></div><div></div><div></div><div></div><div></div><div></div><div></div><div></div><div></div><div></div><div></div><div></div><div></div><div></div><div></div><div></div><div></div><div></div><div></div><div></div><div></div><div></div><div></div><div></div><div></div><div></div><div></div><div></div><div></div><div></div><div></div><div></div><div></div><div></div><div></div><div></div><div></div><div></div><div></div><div></div><div></div><div></div><div></div><div></div><div></div><div></div><div></div><div></div><div></div><div></div><div></div><div></div><div></div><div></div><div></div><div></div><div></div><div></div><div></div><div></div><div></div><div></div><div></div><div></div><div></div><div></div><div></div><div></div><div></div><div></div><div></div><div></div><div></div><div></div><div></div><div></div><div></div><div></div><div></div><div></div><div></div><div></div><div></div><div></div><div></div><div></div><div></div><div></div><div></div><div></div><div></div><div></div><div></div><div></div><div></div><div></div><div></div><div></div><div></div><div></div><div></div><div></div><div></div><div></div><div></div><div></div><div></div><div></div><div></div><div></div><div></div><div></div><div></div><div></div><div></div><div></div><div></div><div></div><div></div><div></div><div></div><div></div><div></div><div></div><div></div><div></div><div></div><div></div><div></div><div></div><div></div><div></div><div></div><div></div><div></div><div></div><div></div><div></div><div></div><div></div><div></div><div></div><div></div><div></div><div></div><div></div><div></div><div></div><div></div><div></div><div></div><div></div><div></div><div></div><div></div><div></div><div></div><div></div><div></div><div></div><div></div><div></div><div></div><div></div><div></div><div></div><div></div><div></div><div></div><div></div><div></div><div></div><div></div><div></div><div></div><div></div><div></div><div></div><div></div><div></div><div></div><div></div><div></div><div></div><div></div><div></div><div></div><div></div><div></div><div></div><div></div><div></div><div></div><div></div><div></div><div></div><div></div><div></div><div></div><div></div><div></div><div></div><div></div><div></div><div></div><div></div><div></div><div></div><div></div><div></div><div></div><div></div><div></div><div></div><div></div><div></div><div></div><div></div><div></div><div></div><div></div><div></div><div></div><div></div><div></div><div></div><div></div><div></div><div></div><div></div><div></div><div></div><div></div><div></div><div></div><div></div><div></div><div></div><div></div><div></div><div></div><div></div><div></div><div></div><div></div><div></div><div></div><div></div><div></div><div></div><div></div><div></div><div></div><div></div><div></div><div></div><div></div><div></div><div></div><div></div><div></div><div></div><div></div><div></div><div></div><div></div><div></div><div></div><div></div><div></div><div></div><div></div><div></div><div></div><div></div><div></div><div></div><div></div><div></div><div></div><div></div><div></div><div></div><div></div><div></div><div></div><div></div><div></div><div></div><div></div><div></div><div></div><div></div><div></div><div></div><div></div><div></div><div></div><div></div><div></div><div></div><div></div><div></div><div></div><div></div><div></div><div></div><div></div><div></div><div></div><div></div><div></div><div></div><div></div><div></div><div></div><div></div><div></div><div></div><div></div><div></div><div></div><div></div><div></div><div></div><div></div><div></div><div></div><div></div><div></div><div></div><div></div><div></div><div></div><div></div><div></div><div></div><div></div><div></div><div></div><div></div><div></div><div></div><div></div><div></div><div></div><div></div><div></div><div></div><div></div><div></div><div></div><div></div><div></div><div></div><div></div><div></div><div></div><div></div><div></div><div></div><div></div><div></div><div></div><div></div><div></div><div></div><div></div><div></div><div></div><div></div><div></div><div></div><div></div><div></div><div></div><div></div><div></div><div></div><div></div><div></div><div></div><div></div><div></div><div></div><div></div><div></div><div></div><div></div><div></div><div></div><div></div><div></div><div></div><div></div><div></div><div></div><div></div><div></div><div></div><div></div><div></div><div></div><div></div><div></div><div></div><div></div><div></div><div></div><div></div><div></div><div></div><div></div><div></div><div></div><div></div><div></div><div></div><div></div><div></div><div></div><div></div><div></div><div></div><div></div><div></div><div></div><div></div><div></div><div></div><div></div><div></div><div></div><div></div><div></div><div></div><div></div><div></div><div></div><div></div><div></div><div></div><div></div><div></div><div></div><div></div><div></div><div></div><div></div><div></div><div></div><div></div><div></div><div></div><div></div><div></div><div></div><div></div><div></div><div></div><div></div><div></div></div></div>
---

BOM			
ITEM	PART NUMBER	DESCRIPTION	QTY
2	31135	2 Stall Front Wall Final Assy	1
9	11433	AC Heater 7500 BTU 115V Window	2
25	11436	Light Exterior LED	2
41	11592	Ridge Cap End Cap	2
50	50125	Final Assembly Roof Front Hygiene HD	1
53	10039	100 sqft Ridge Cap Assy	1



<div><div><div></div><div></div><div></div><div></div><div></div><div></div><div></div><div></div><div></div><div></div><div></div><div></div><div></div><div></div><div></div><div></div><div></div><div></div><div></div><div></div><div></div><div></div><div></div><div></div><div></div><div></div><div></div><div></div><div></div><div></div><div></div><div></div><div></div><div></div><div></div><div></div><div></div><div></div><div></div><div></div><div></div><div></div><div></div><div></div><div></div><div></div><div></div><div></div><div></div><div></div><div></div><div></div><div></div><div></div><div></div><div></div><div></div><div></div><div></div><div></div><div></div><div></div><div></div><div></div><div></div><div></div><div></div><div></div><div></div><div></div><div></div><div></div><div></div><div></div><div></div><div></div><div></div><div></div><div></div><div></div><div></div><div></div><div></div><div></div><div></div><div></div><div></div><div></div><div></div><div></div><div></div><div></div><div></div><div></div><div></div><div></div><div></div><div></div><div></div><div></div><div></div><div></div><div></div><div></div><div></div><div></div><div></div><div></div><div></div><div></div><div></div><div></div><div></div><div></div><div></div><div></div><div></div><div></div><div></div><div></div><div></div><div></div><div></div><div></div><div></div><div></div><div></div><div></div><div></div><div></div><div></div><div></div><div></div><div></div><div></div><div></div><div></div><div></div><div></div><div></div><div></div><div></div><div></div><div></div><div></div><div></div><div></div><div></div><div></div><div></div><div></div><div></div><div></div><div></div><div></div><div></div><div></div><div></div><div></div><div></div><div></div><div></div><div></div><div></div><div></div><div></div><div></div><div></div><div></div><div></div><div></div><div></div><div></div><div></div><div></div><div></div><div></div><div></div><div></div><div></div><div></div><div></div><div></div><div></div><div></div><div></div><div></div><div></div><div></div><div></div><div></div><div></div><div></div><div></div><div></div><div></div><div></div><div></div><div></div><div></div><div></div><div></div><div></div><div></div><div></div><div></div><div></div><div></div><div></div><div></div><div></div><div></div><div></div><div></div><div></div><div></div><div></div><div></div><div></div><div></div><div></div><div></div><div></div><div></div><div></div><div></div><div></div><div></div><div></div><div></div><div></div><div></div><div></div><div></div><div></div><div></div><div></div><div></div><div></div><div></div><div></div><div></div><div></div><div></div><div></div><div></div><div></div><div></div><div></div><div></div><div></div><div></div><div></div><div></div><div></div><div></div><div></div><div></div><div></div><div></div><div></div><div></div><div></div><div></div><div></div><div></div><div></div><div></div><div></div><div></div><div></div><div></div><div></div><div></div><div></div><div></div><div></div><div></div><div></div><div></div><div></div><div></div><div></div><div></div><div></div><div></div><div></div><div></div><div></div><div></div><div></div><div></div><div></div><div></div><div></div><div></div><div></div><div></div><div></div><div></div><div></div><div></div><div></div><div></div><div></div><div></div><div></div><div></div><div></div><div></div><div></div><div></div><div></div><div></div><div></div><div></div><div></div><div></div><div></div><div></div><div></div><div></div><div></div><div></div><div></div><div></div><div></div><div></div><div></div><div></div><div></div><div></div><div></div><div></div><div></div><div></div><div></div><div></div><div></div><div></div><div></div><div></div><div></div><div></div><div></div><div></div><div></div><div></div><div></div><div></div><div></div><div></div><div></div><div></div><div></div><div></div><div></div><div></div><div></div><div></div><div></div><div></div><div></div><div></div><div></div><div></div><div></div><div></div><div></div><div></div><div></div><div></div><div></div><div></div><div></div><div></div><div></div><div></div><div></div><div></div><div></div><div></div><div></div><div></div><div></div><div></div><div></div><div></div><div></div><div></div><div></div><div></div><div></div><div></div><div></div><div></div><div></div><div></div><div></div><div></div><div></div><div></div><div></div><div></div><div></div><div></div><div></div><div></div><div></div><div></div><div></div><div></div><div></div><div></div><div></div><div></div><div></div><div></div><div></div><div></div><div></div><div></div><div></div><div></div><div></div><div></div><div></div><div></div><div></div><div></div><div></div><div></div><div></div><div></div><div></div><div></div><div></div><div></div><div></div><div></div><div></div><div></div><div></div><div></div><div></div><div></div><div></div><div></div><div></div><div></div><div></div><div></div><div></div><div></div><div></div><div></div><div></div><div></div><div></div><div></div><div></div><div></div><div></div><div></div><div></div><div></div><div></div><div></div><div></div><div></div><div></div><div></div><div></div><div></div><div></div><div></div><div></div><div></div><div></div><div></div><div></div><div></div><div></div><div></div><div></div><div></div><div></div><div></div><div></div><div></div><div></div><div></div><div></div><div></div><div></div><div></div><div></div><div></div><div></div><div></div><div></div><div></div><div></div><div></div><div></div><div></div><div></div><div></div><div></div><div></div><div></div><div></div><div></div><div></div><div></div><div></div><div></div><div></div><div></div><div></div><div></div><div></div><div></div><div></div><div></div><div></div><div></div><div></div><div></div><div></div><div></div><div></div><div></div><div></div><div></div><div></div><div></div><div></div><div></div><div></div><div></div><div></div><div></div><div></div><div></div><div></div><div></div><div></div><div></div><div></div><div></div><div></div><div></div><div></div><div></div><div></div><div></div><div></div><div></div><div></div><div></div><div></div><div></div><div></div><div></div><div></div><div></div><div></div><div></div><div></div><div></div><div></div><div></div><div></div><div></div><div></div><div></div><div></div><div></div><div></div><div></div><div></div><div></div><div></div><div></div><div></div><div></div><div></div><div></div><div></div><div></div><div></div><div></div><div></div><div></div><div></div><div></div><div></div><div></div><div></div><div></div><div></div><div></div><div></div><div></div><div></div><div></div><div></div><div></div><div></div><div></div><div></div><div></div><div></div><div></div><div></div><div></div><div></div><div></div><div></div><div></div><div></div><div></div><div></div><div></div><div></div><div></div><div></div><div></div><div></div><div></div><div></div><div></div><div></div><div></div><div></div><div></div><div></div><div></div><div></div><div></div><div></div><div></div><div></div><div></div><div></div><div></div><div></div><div></div><div></div><div></div><div></div><div></div><div></div><div></div><div></div><div></div><div></div><div></div><div></div><div></div><div></div><div></div><div></div><div></div><div></div><div></div><div></div><div></div><div></div><div></div><div></div><div></div><div></div><div></div><div></div><div></div><div></div><div></div><div></div><div></div><div></div><div></div><div></div><div></div><div></div><div></div><div></div><div></div><div></div><div></div><div></div><div></div><div></div><div></div><div></div><div></div><div></div><div></div><div></div><div></div><div></div><div></div><div></div><div></div><div></div><div></div><div></div><div></div><div></div><div></div><div></div><div></div><div></div><div></div><div></div><div></div><div></div><div></div><div></div><div></div><div></div><div></div><div></div><div></div><div></div><div></div><div></div><div></div><div></div><div></div><div></div><div></div><div></div><div></div><div></div><div></div><div></div><div></div><div></div><div></div><div></div><div></div><div></div><div></div><div></div><div></div><div></div><div></div><div></div><div></div><div></div><div></div><div></div><div></div><div></div><div></div><div></div><div></div><div></div><div></div><div></div><div></div><div></div><div></div><div></div><div></div><div></div><div></div><div></div><div></div><div></div><div></div><div></div><div></div><div></div><div></div><div></div><div></div><div></div><div></div><div></div><div></div><div></div><div></div><div></div><div></div><div></div><div></div><div></div><div></div><div></div><div></div><div></div><div></div><div></div><div></div><div></div><div></div><div></div><div></div><div></div><div></div><div></div><div></div><div></div><div></div><div></div><div></div><div></div><div></div><div></div><div></div><div></div><div></div><div></div><div></div><div></div><div></div><div></div><div></div><div></div><div></div><div></div><div></div><div></div><div></div><div></div><div></div><div></div><div></div><div></div><div></div><div></div><div></div><div></div><div></div><div></div><div></div><div></div><div></div><div></div><div></div><div></div><div></div><div></div><div></div><div></div><div></div><div></div><div></div><div></div><div></div><div></div><div></div><div></div><div></div><div></div><div></div><div></div><div></div><div></div><div></div><div></div><div></div><div></div><div></div><div></div><div></div><div></div><div></div><div></div><div></div><div></div><div></div><div></div><div></div><div></div><div></div><div></div><div></div><div></div><div></div><div></div><div></div><div></div><div></div><div></div><div></div><div></div><div></div><div></div><div></div><div></div><div></div><div></div><div></div><div></div><div></div><div></div><div></div><div></div><div></div><div></div><div></div><div></div><div></div><div></div><div></div><div></div><div></div><div></div><div></div><div></div><div></div><div></div><div></div><div></div><div></div><div></div><div></div><div></div><div></div><div></div><div></div><div></div><div></div><div></div><div></div><div></div><div></div><div></div><div></div><div></div><div></div><div></div><div></div><div></div><div></div><div></div><div></div><div></div><div></div><div></div><div></div><div></div><div></div><div></div><div></div><div></div><div></div><div></div><div></div><div></div><div></div><div></div><div></div><div></div><div></div><div></div><div></div><div></div><div></div><div></div><div></div><div></div><div></div><div></div><div></div><div></div><div></div><div></div><div></div><div></div><div></div><div></div><div></div><div></div><div></div><div></div><div></div><div></div><div></div><div></div><div></div><div></div><div></div><div></div><div></div><div></div><div></div><div></div><div></div><div></div><div></div><div></div><div></div><div></div><div></div><div></div><div></div><div></div><div></div><div></div><div></div><div></div><div></div><div></div><div></div><div></div><div></div><div></div><div></div><div></div><div></div><div></div><div></div><div></div><div></div><div></div><div></div><div></div><div></div><div></div><div></div><div></div><div></div><div></div><div></div><div></div><div></div><div></div><div></div><div></div><div></div><div></div><div></div><div></div><div></div><div></div><div></div><div></div><div></div><div></div><div></div><div></div><div></div><div></div><div></div><div></div><div></div><div></div><div></div><div></div><div></div><div></div><div></div><div></div><div></div><div></div><div></div><div></div><div></div><div></div><div></div><div></div><div></div><div></div><div></div><div></div><div></div><div></div><div></div><div></div><div></div><div></div><div></div><div></div><div></div><div></div><div></div><div></div><div></div><div></div><div></div><div></div><div></div><div></div><div></div><div></div><div></div><div></div><div></div><div></div><div></div><div></div><div></div><div></div><div></div><div></div><div></div><div></div><div></div><div></div><div></div><div></div><div></div><div></div><div></div><div></div><div></div><div></div><div></div><div></div><div></div><div></div><div></div><div></div><div></div><div></div><div></div><div></div><div></div><div></div><div></div><div></div><div></div><div></div><div></div><div></div><div></div><div></div><div></div><div></div><div></div><div></div><div>&lt;/</div></div></div>
--

# ACCESSIBLE HYGIENE + HALF BATH



The same features as our standard unit with the added benefit of an additional half bath. Perfect for adding bathroom capacity or as an admin storage, this 100 square foot unit offers turnkey installation ease and familiar residential fixtures.



### Standard Features

- 1 Standard flush toilets and hot/cold water sinks and showers
- 2 Fold-down shower bench
- 3 Standard sewer and electrical hookups for easy installation
- 4 Second half bath or space for storage
- 5 Locking doors
- 6 Heat, A/C, exhaust fan, and humidity sensor
- 7 Slip-resistant floors
- 8 Resistant to mold, mildew, and pests

### Benefits

- Accessible:** Designed with accessibility features that support every Pallet village resident.
- Easy to Clean:** Inorganic materials make cleaning and sanitizing an easy task.
- Versatile:** Attached half-bathroom unit can double as storage space.



### Technical Specifications

Interior Dimensions (Accessible)	10' W x 7'½" D x 7'6" to 8'10" H	304.8 cm W x 214.9 cm D x 228.6 cm to 269.2 cm H
Interior Dimensions (Half Bath)	3'4½" W x 7'½" D x 7'6" to 8'10" H	102.8 cm W x 214.9 cm D x 228.6 cm to 269.2 cm H
Square Footage	100 sq. ft.	9.3 m2
Shelter Weight	Approx. 2116 lb.	Approx. 960 kg.
Wind Rating	Up to 155 mph (exposure C) Up to 170 mph (exposure B)	Up to 250 kmh (exposure C) Up to 274 kmh (exposure B)
Design Snow Load	Up to 80 lb. per sq. ft.	Up to 3.83 kPa



Class B Fire rating for panel skin  
Class C Fire rating for full assembly



- **Material:** Structural insulated panel
- **Lifespan:** 15 - 20 years
- **Warranty:** Standard manufacturer warranty

# ACCESSIBLE HYGIENE + HALF BATH



## Standard Product Specifications

### Dimensions

DESCRIPTION	STANDARD SPECIFICATIONS	
Exterior Dimensions, Eve-to-Eve	13'11 <sup>5</sup> / <sub>8</sub> " W x 8'5 <sup>1</sup> / <sub>2</sub> " D	425.7 cm W x 257.8 cm D
Exterior Dimensions, Wall-to-Wall	13'9 <sup>7</sup> / <sub>8</sub> " W x 7'9 <sup>3</sup> / <sub>4</sub> " D	421.3 cm W x 238.1 cm D
Interior Dimensions, Wall-to-Wall, Accessible Stall	10' W x 7'5 <sup>5</sup> / <sub>8</sub> " D	304.8 cm W x 214.9 cm D
Interior Dimensions, Wall-to-Wall, Half Bath Stall	3'4 <sup>1</sup> / <sub>2</sub> " W x 7'5 <sup>5</sup> / <sub>8</sub> " D	102.8 cm W x 214.9 cm D
Overall Height	10' 2" H	309.9 cm H
Min/Max Ceiling Height	7'6" to 8'10" H	228.6 cm to 269.2 cm H
Interior Square Footage	100 sq. ft.	9.3 m <sup>2</sup>

### Means of Egress & Ventilation

DESCRIPTION	STANDARD SPECIFICATIONS	
Panel Door	(1) 36" x 80" Panel Doors (1) 32" x 80" Panel Doors	1 @ 91.4 cm x 203.2 cm 1 @ 81.3 cm x 203.2 cm
Exhaust Fan with Humidity Sensor	2	

### Weights & Ratings

DESCRIPTION	STANDARD SPECIFICATIONS	
Accessible + Half Bath		
Weight of Unit (Including Standard Features)	Approx. 2,116 lb.	960 kg
Wind Rating	Up to 155 mph (exposure C) Up to 170 mph (exposure B)	Up to 250 kmh (exposure C) Up to 274 kmh (exposure B)
Tie Down Requirement per Corner	Up to 1,800 lb.	Up to 816.47 kg
Design Snow load Rating	Up to 80 lb. per sq. ft.	Up to 3.83 kPa
Floor Live Load Rating	Up to 40 lb. per sq. ft.	Up to 1.9 kPa
Fire Rating	ASTEM-E84 Class B Surface   Class C Full System	

### Materials and Construction

DESCRIPTION	STANDARD MATERIALS OF CONSTRUCTION
Floor/Base	Welded aluminum frame with foam core composite SIP panel
Roof & Wall Panel	Foam core composite SIP panel with aluminum sub frame
Windows (Landry Room Only)	Vinyl frame with dual pane Low-E glass



Panel Thickness

DESCRIPTION	STANDARD MATERIALS OF CONSTRUCTION	
Walls	1 3/4"	4.4 cm
Roof	1 3/4"	4.4 cm
Floor	1/2"	1.3 cm

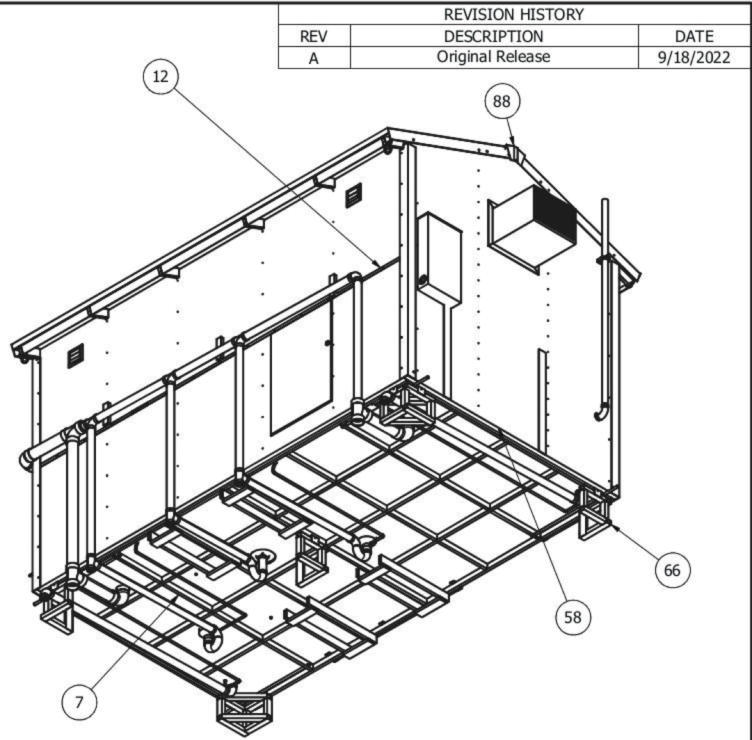
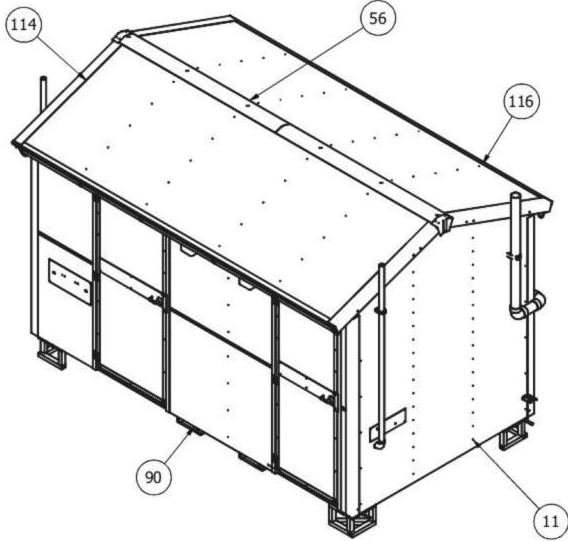
Infrastructure Requirements

DESCRIPTION	STANDARD SPECIFICATIONS
Electrical Connection	240V 1 PH
Tie Down Requirement per Corner	Up to 1,800 lb. / 1.9 kPa
Water	1/2" NPT
Sewer	(7) PVC Drains

Standard Features

- (1) 36"x 80" panel door
- (1) 32"x 80" panel door
- (2) 120V outlets
- (2) 4ft LED strip lights
- (2) Photocell controlled exterior LED lights
- (1) Combination heater/AC unit (3,850 BTU for heat, 7,500 BTU for cooling)
- (2) Exhaust fans with humidity sensor
- (1) Accessible toilet, (1) accessible shower, and (1) accessible sink
- (1) Standard toilet and (1) standard sink (same toilet as installed in accessible unit)
- On demand (tankless) electric water heater

BOM			
ITEM	PART NUMBER	DESCRIPTION	QTY
7	34009	Final Assy. Base Floor Accessible 2 Stall	1
11	34012	Final Assy. Side Wall Right Accessible	1
12	34013	Final Assy. Wall Back Accessible 2 Stall	1
56	10039	Final Assy. 100 sqft Ridge Cap	1
58	34060	Final Assembly Side Wall Accessible 2 Stall Ridge	1
66	20117	Hygiene Stand Full Assy	5
88	11592	Ridge Cap End Cap	2
90	34087	Final Assembly Wall Front Accessible 2 Stall	1
114	50125	Final Assembly Roof Front Hygiene HD	1
116	50127	Final Assembly Roof Back Hygiene HD	1



NOT TO SCALE

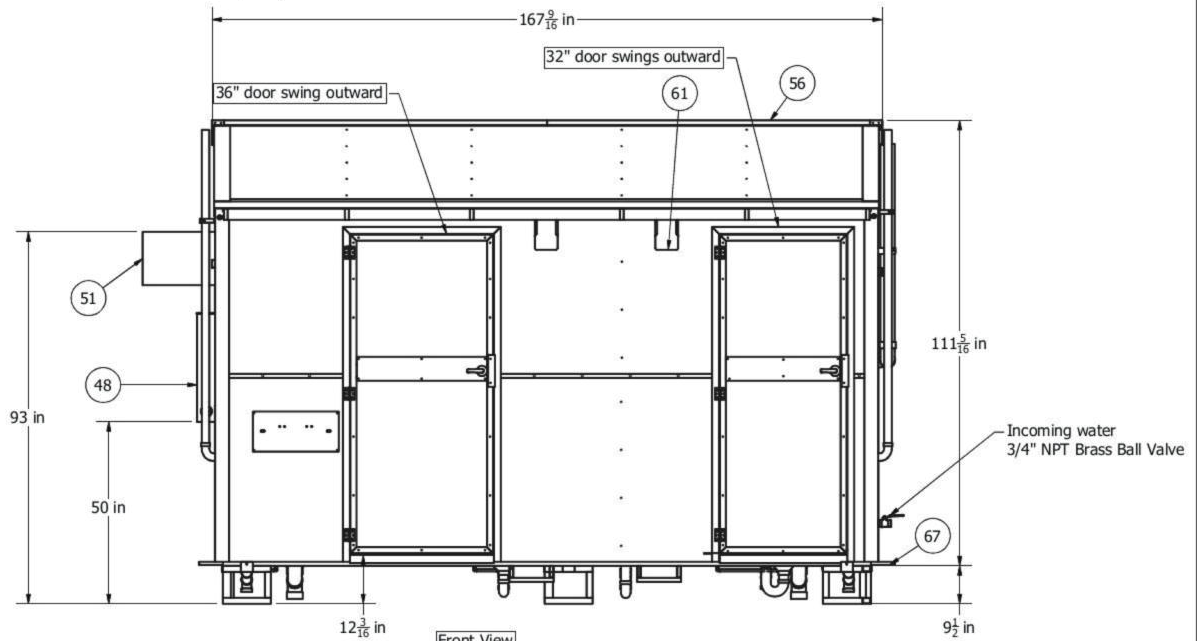
DRAWN BY: dan bender  
DATE: 9/3/2024  
CHECKED BY: Aaron Scott  
DATE: 9/11/2024  
MFG CHECKED BY: Trevor Russell  
DATE: 9/30/2024  
APPROVED BY: Greg Millholland  
DATE: 9/18/2024

UNLESS OTHERWISE SPECIFIED:  
DIMENSIONS ARE IN INCHES  
TOLERANCES:  
FRACTIONAL: ± 1/16  
DECIMAL: ± 0.1  
HOLE: ± 0.01  
X.XX ± 0.01  
X.XXX ± 0.001

TITLE  
Final Assembly Accessible 2 Stall  
High Load  
PART NUMBER  
30537  
REV  
A  
Released  
SHEET 1 OF 14

BOM			
ITEM	PART NUMBER	DESCRIPTION	QTY
48		Hygiene Electrical Loadcenter Panel	1
51	11433	AC Heater 7500 BTU AC 115 Window	1
56	10039	Final Assy. 100 sqft Ridge Cap	1
61	11436	Light Exterior LED	2
67	10296	Hold Down Rod 100 SF	4

Loadcenter supplied by electrical contractor



NOT TO SCALE

DRAWN BY: dan bender  
DATE: 9/3/2024  
CHECKED BY: Aaron Scott  
DATE: 9/11/2024  
MFG CHECKED BY: Trevor Russell  
DATE: 9/30/2024  
APPROVED BY: Greg Millholland  
DATE: 9/18/2024

UNLESS OTHERWISE SPECIFIED:  
DIMENSIONS ARE IN INCHES  
TOLERANCES:  
FRACTIONAL: ± 1/16  
DECIMAL: ± 0.1  
HOLE: ± 0.01  
X.XX ± 0.01  
X.XXX ± 0.001

TITLE  
Final Assembly Accessible 2 Stall  
High Load  
PART NUMBER  
30537  
REV  
A  
Released  
SHEET 2 OF 14

# TEAM BIOS



## **Greg Milholland, VP of Operations**

As Pallet's VP of Operations, Greg is responsible for new product development, manufacturing engineering, and production. Greg brings over 44 years of experience in operations, manufacturing, and product development. Before Pallet, Greg worked for over two decades in the medical device industry developing products for eye surgery. He was part of a small team who developed processes and systems that earned the organization ISO 9001 certification status. After moving from medical devices, Greg took a position with a large precision sheet metal manufacturer, NIC Global, as Manager of the Continuous Improvement Office. His work in Continuous Improvement and Lean Manufacturing for NIC extended to projects working with companies such as Paccar, Intermec, Medtronic, Coinstar, and Leviton. After managing the Continuous Improvement Office and running one of the dedicated business units with NIC Global, he became the VP of Manufacturing for Ultimate Survival Technologies. At UST, he managed the operations and production of survival gear used by the U.S. DOD, manufacturing items such as bullet proof vests, CBRNE decontamination systems, tactical vests, composite shipping containers, and numerous other items. Greg's passion for continuous improvement and belief in the potential of people to do amazing things in the world drew him to Pallet.



## **John Baskett, Planning & Technical Operations Manager**

John brings over 12 years of experience in the field of Urban Planning to Pallet projects. John has extensive experience in site analysis and site development. Before Pallet Shelter, John served 7 years as Principal Planner for San Xavier District of the Tohono O'odham Nation where he implemented utility/infrastructure projects, housing development, commercial and economic development projects, floodplain mitigation strategies as well as community parks. Prior to that, John worked 5 years in the Coconino County Engineering Division and Coconino County Planning Department overseeing community relations, plan review, permit issuance and inspections. John holds a Bachelor of Arts from University of Nevada Las Vegas in Anthropology and a Bachelor of Science from Northern Arizona University in Urban Planning. John is also International Code Council certified.



## **Sarah, Customer Support Coordinator**

Sarah has a passion for engaging with customers and people seeking support who are experiencing homelessness and providing solutions or connecting people with resources. Before joining Pallet Sarah experienced homelessness, substance use disorder and interaction with the criminal legal system. Sarah was president and comptroller of an Oxford community and is proud of her two years of sobriety. She approaches people and challenges using the lens of lived experience which provides thoughtful, original, compassionate ideas to address a myriad of issues. Sarah is a member of the Pallet Leadership team which provides her with the opportunity to directly influence companywide decisions.



## **James Bennett, Field Operations Supervisor**

In his four-and-a-half years at Pallet, he has supervised over 67 deployments in 36 states across the U.S. and three Canadian provinces. He is considered our internal expert on our S1 and S2 shelter lines, having built more units in the field than anyone in the company. His background, including serving eight years in the U.S. Army as an Airport Rescue Firefighter and extensive team leadership experience in various production environments, has prepared James to fully manage Pallet deployments—from site preparation and logistics to team management and project completion.





info@palletshelter.com | 425-535-4866 | palletshelter.com

