



# HOLLICE T. WILLIAMS GREENWAY FRAMEWORK PLAN

Regeneration of a vital link into Pensacola's downtown and waterfront

# How Do We Recreate Pensacola's gateway corridor?

## Today

The Hollice T. Williams Park is an adaptive application of a 1.3 linear mile highway underpass situated at the threshold to downtown Pensacola. Though improved with the Hunter Municipal Pool and other traditional park features, this visible corridor is currently under-utilized and incomplete. A visionary framework plan has been developed to transform this corridor into a notable northern gateway.



## Future

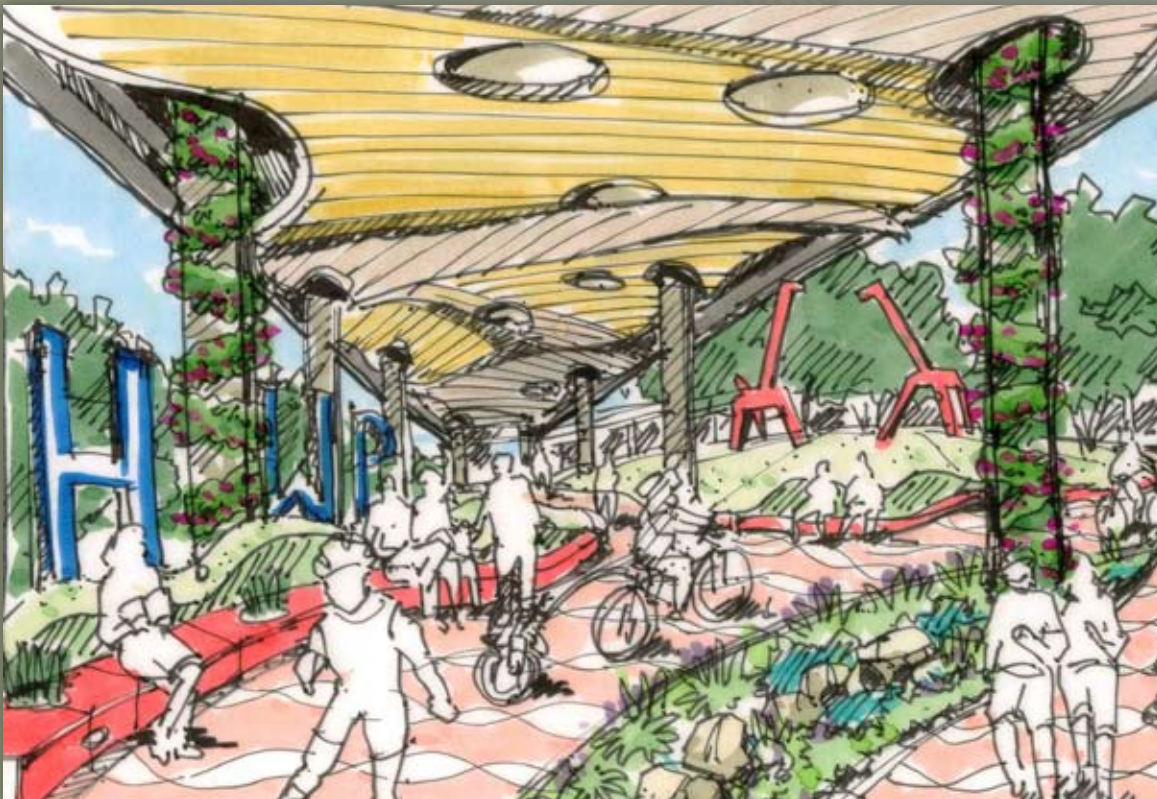
An iconic, one-of-a-kind urban green spine that will provide community-wide enjoyment and activity options for all ages—this is the future of the Hollice T. Williams Greenway. This greenway corridor will not only become a radically revitalized gateway connection into the heart of the city, but a destination for those who seek a unique and culturally diverse venue for recreation or relaxation.



## The Vision!

### Re-imagine *this* link into the Pensacola downtown and waterfront

It is a civic space like none other in our city—a symbol and expression of Pensacola's urban identity and future direction. The Hollice T. Williams Urban Linear Greenway is a landscaped interface to the city center and waterfront that transforms how visitors and residents experience Pensacola. It is an engaging civic space making a positive statement about the livability and vibrancy of our city. The bold vision has been realized, resulting in a uniquely attractive segment of the public realm that has infused the city's urban fabric with nature's shapes and colors.



### Goals:

- To create an iconic asset for Pensacola and a signature civic space.
- To regenerate a primary gateway to the city's center to make powerfully positive statement of Pensacola's identity.
- To transform the public realm, enhancing the value of neighboring property, increasing both livability and city image.
- To create a one-of-a-kind leisure opportunity.

## Imagine *Complete Harmony*

As the city's newest gathering place, the Greenway stands out as much for its beauty as it does for its practical uses. Three integral sections of the park are identified as Reflection, Connectivity, and Integration. Together, they achieve the goals for the Greenway and bring the plan to life.

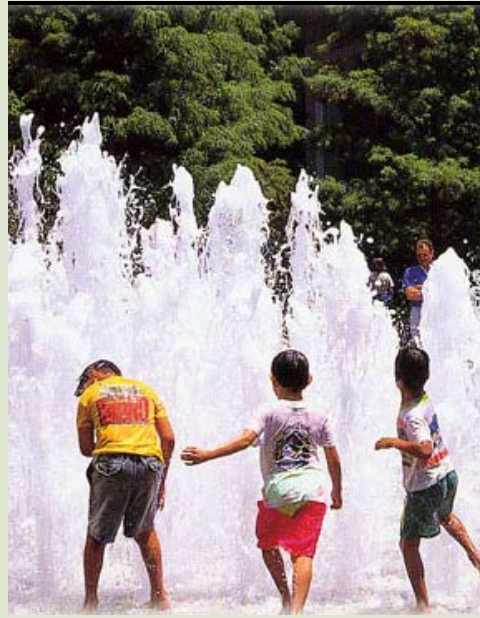
## JUST IMAGINE...



### REFLECTION

## ENDLESS POSSIBILITIES

Blending art and nature, the Hollice T. Williams Greenway will create unity between the urban and natural environment. Sit and read a book. Appreciate the larger than life sculptures from recognized artists that will be displayed throughout the Greenway and the art work that will line the walkways and plazas for onlookers to enjoy.



- B** *CONNECTIVITY*  
**A PERFECT PLACE TO PLAY**
- The Hollice T. Williams Greenway will provide a place for people of all ages to come and play. The active corridor is designed to offer a wealth of recreational opportunities, including: water sport, splash park, basketball, exercise stations, a skate boarding park, and a designated path for walking and biking.



- C** *INTEGRATION*  
**A GARDEN OF BEAUTY**
- The Greenway's community gardens will provide a respite where you can relax and enjoy the sights and scents of nature. Observe the edible gardens planted and cultivated by community partners and residents. The colorful landscape will offer the perfect backdrop for a lunchtime get-away in the park.



REFLECTION

CONNECTIVITY

INTEGRATION

## Imagine A New Reality

The Hollice T. Williams Greenway could be an enduring symbol for the city of Pensacola that serves our present community and generations to come. Not only would the landscape change, but also people's attitudes and perceptions about the surrounding area. This framework plan shows how the goals of the Greenway will be met. We invite you to become a part of this project – to get connected to the people, activities, and the community; to reflect on the beauty and uniqueness of our area and take part in making this a welcoming gateway into the city of Pensacola. Just imagine the possibilities. *Imagine a new reality.*



"I am very enthusiastic about our future plans for the Hollice Williams Park. I think it's a great milestone for the Eastside neighborhood and other surrounding neighborhoods as well. It will be a great place to network and interact with people from all over the world."

Jeannie Rhoden  
President, Eastside Neighborhood Association

"The addition of the Hollice T. Williams Greenway will include the visual stimulation that engages both residents and visitors and draw them in as active participants in the cityscape. It is this kind of space that makes cities alive, creating the best of urban environments."

Sonya Davis  
Executive Director, Pensacola Museum of Art

"I am very excited about the Hollice Williams Urban Greenway. This has been an under-utilized asset of our beautiful city, and now we will have a skateboard park, a pond the community can access, along with walking paths and community gathering areas for all kinds of future events."

Don Whitaker  
North Hill Resident

*You can be a part of something great—Today! Join with us to bring this vision to life.*

City of Pensacola  
Community Development Dept.  
180 Governmental Center  
5th floor of City Hall  
Pensacola, FL 32502  
(850) 436-5655

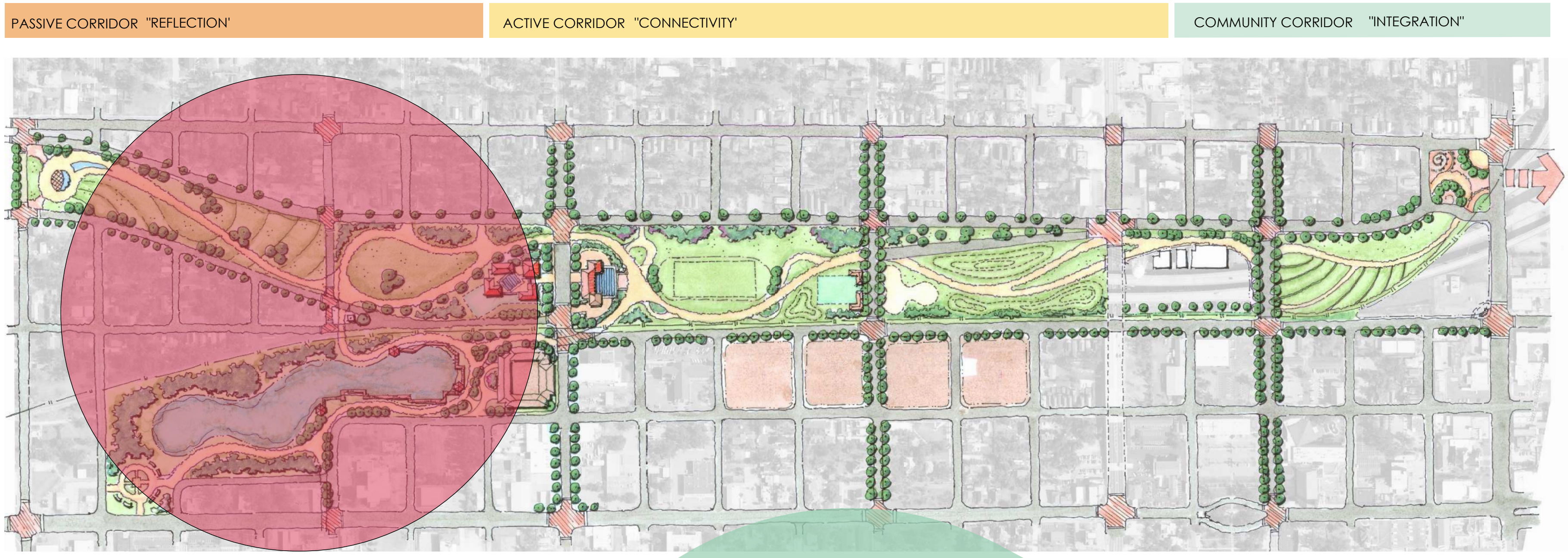
City of Pensacola  
Parks and Recreation Dept.  
(850) 436-5670

[www.playpensacola.com](http://www.playpensacola.com)

# HOLLICET. WILLIAMS

URBAN LINEAR GREENWAY FRAMEWORK PLAN  
CITY OF PENSACOLA, FLORIDA

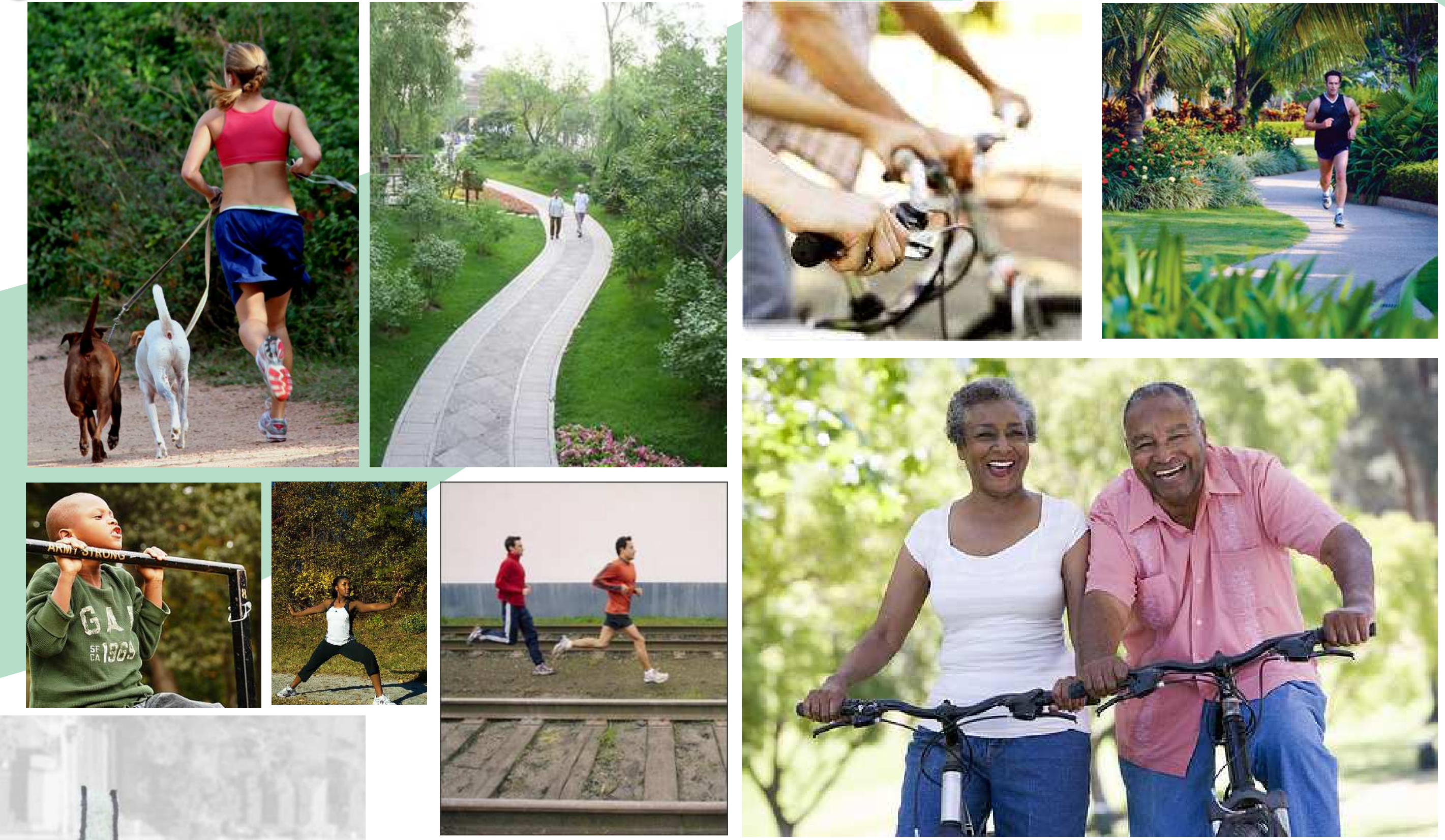
ENLARGEMENT PLAN  
& CHARACTER STUDY  
SHEET 5.00



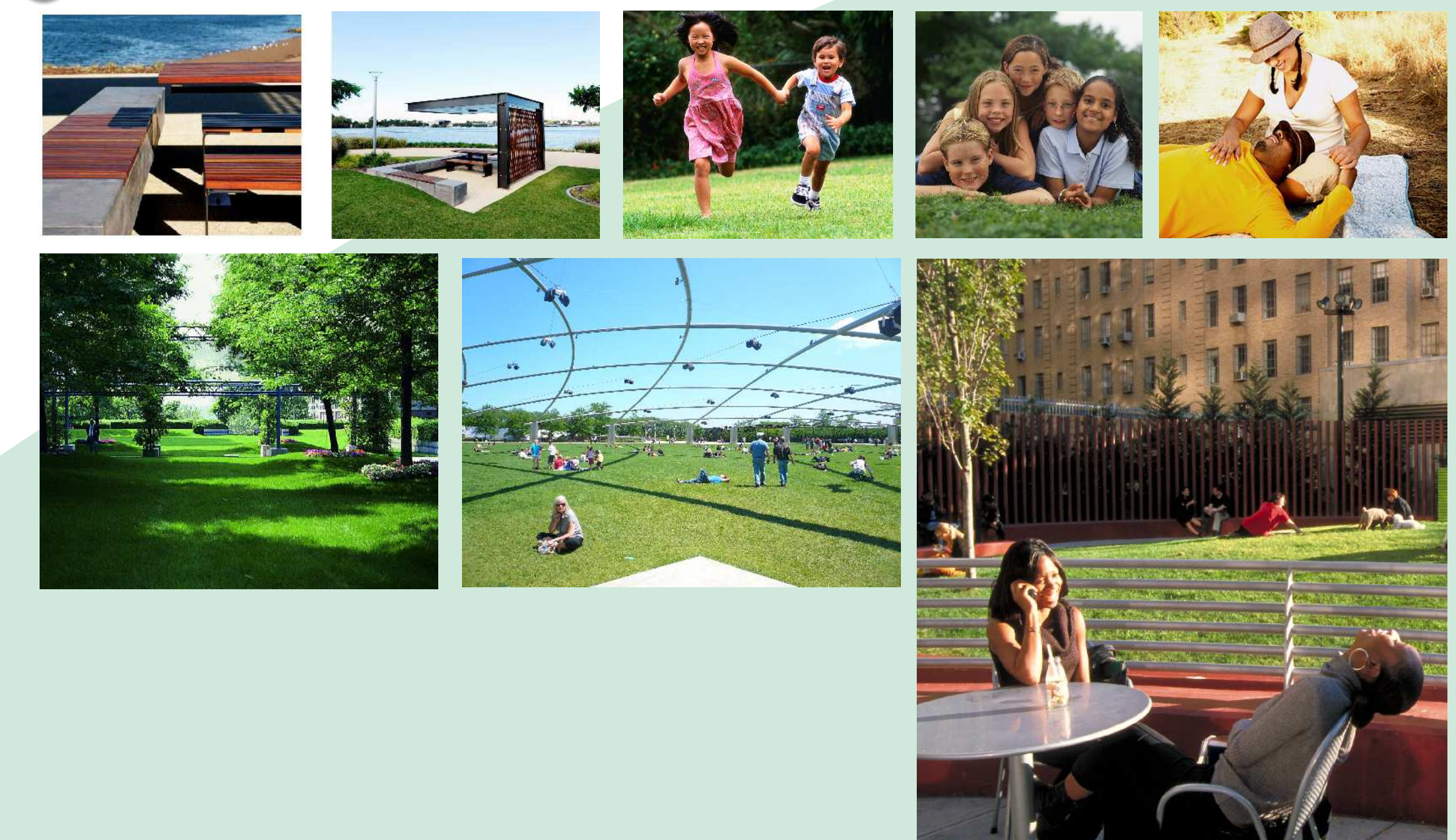
KEYPLAN  
ENLARGEMENT - PASSIVE CORRIDOR



## ① EXTENSIVE TRAIL & EXERCISE PATHS



## ② EXPANSIVE OPEN AREAS



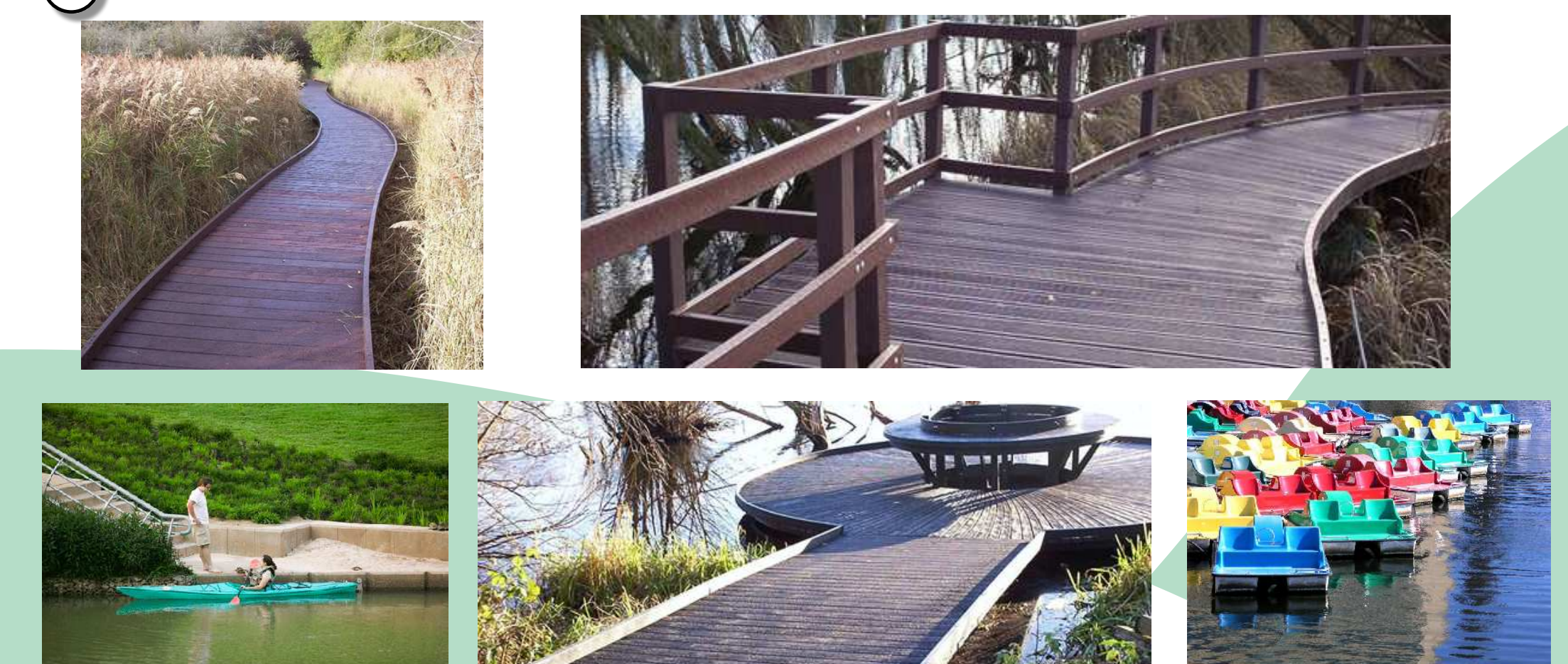
## ③ ART IN THE PARK

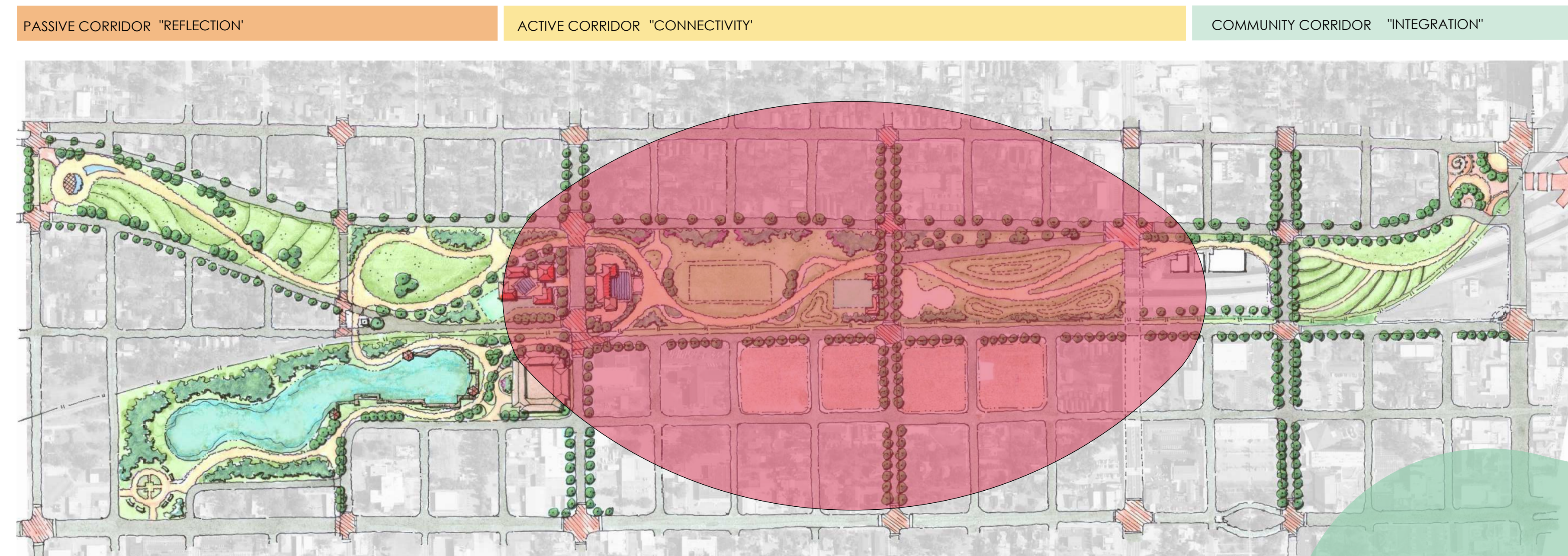


## ④ DOG PARKS



## ⑤ BOARDWALK EXTENSION & WATER ACTIVITIES





KEYPLAN

## ENLARGEMENT - ACTIVE CORRIDOR

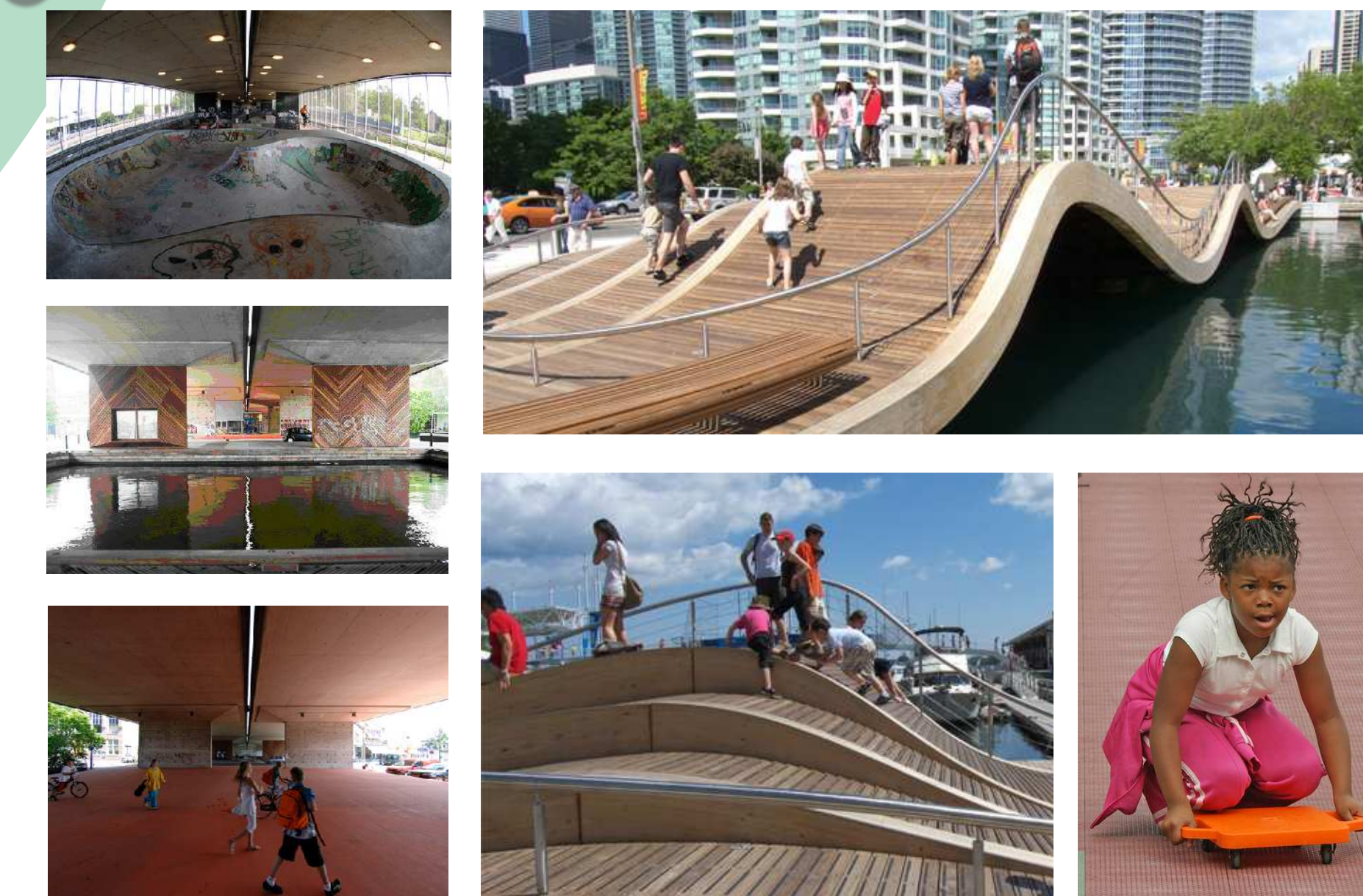


### RECREATION FACILITIES -

#### ① TENNIS, BIKE POLO, PEEWEE FOOTBALL FIELDS

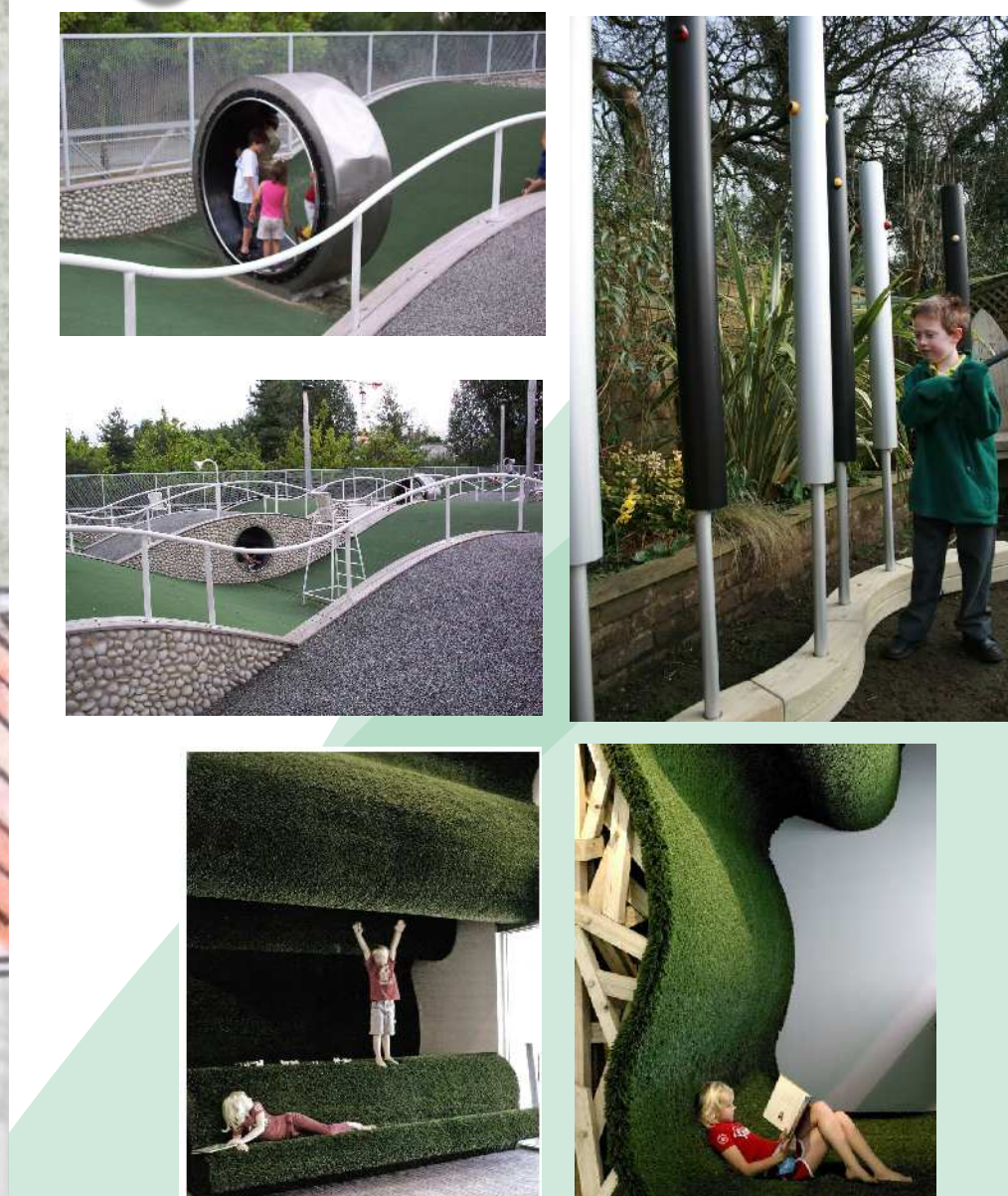


#### ② SKATE PARK



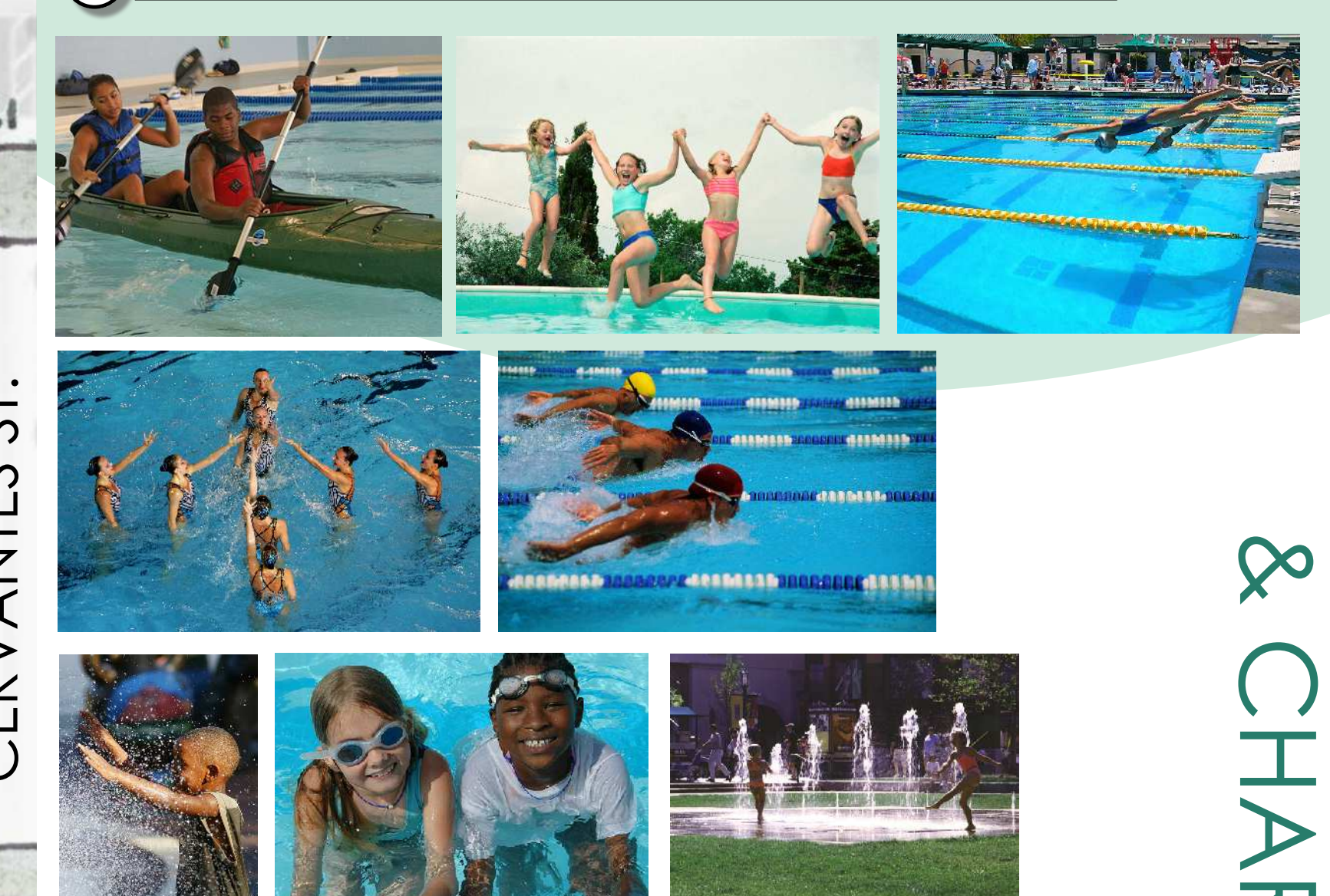
### CHILDREN

#### ③ INTERACTIVE AREA



### POOL FACILITIES -

#### ④ RECREATIONAL & COMPETITIVE



### COMMERCIAL/RETAIL

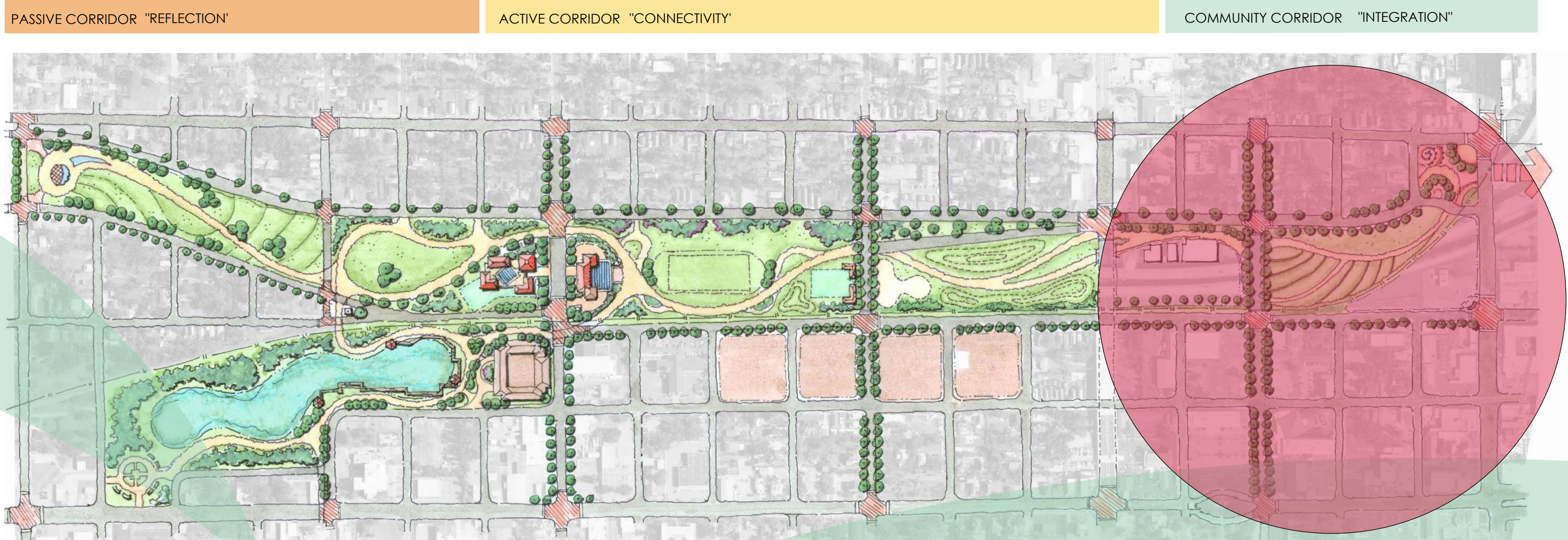
#### ⑤ REDEVELOPMENT



# HOLLICET. WILLIAMS

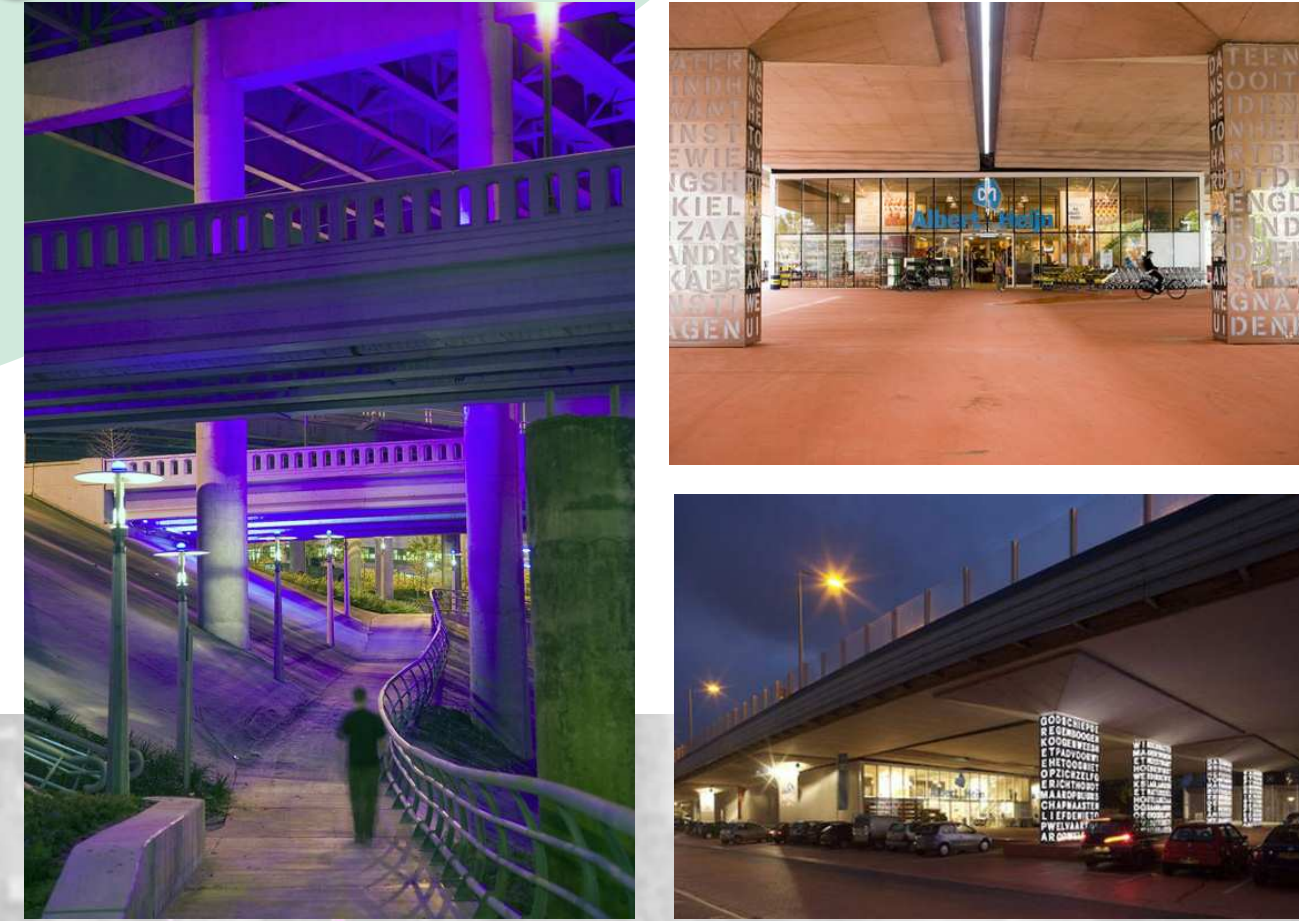
## URBAN LINEAR GREENWAY FRAMEWORK PLAN

### CITY OF PENSACOLA, FLORIDA



KEYPLAN

ART & LIGHTING DISPLAYS  
① ON INTERSTATE FOUNDATIONS



JAZZ FESTIVALS & COMMUNITY  
② GATHERINGS



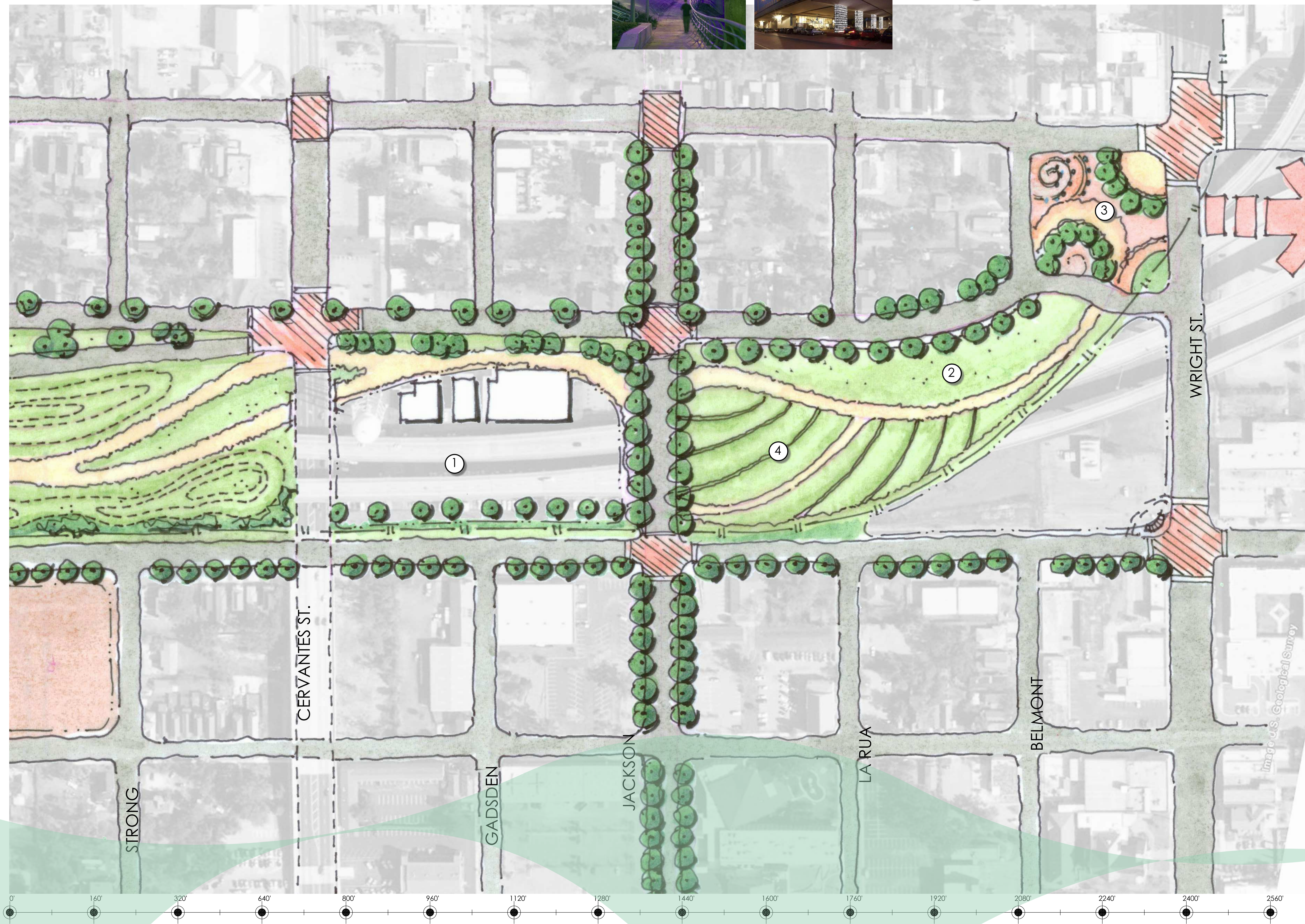
PEDESTRIAN PLAZA WITH  
③ LINKS TO DOWNTOWN



④ COMMUNITY GARDENS



ENLARGEMENT - COMMUNITY CORRIDOR



ENLARGEMENT PLAN  
& CHARACTER STUDY  
SHEET 7.00